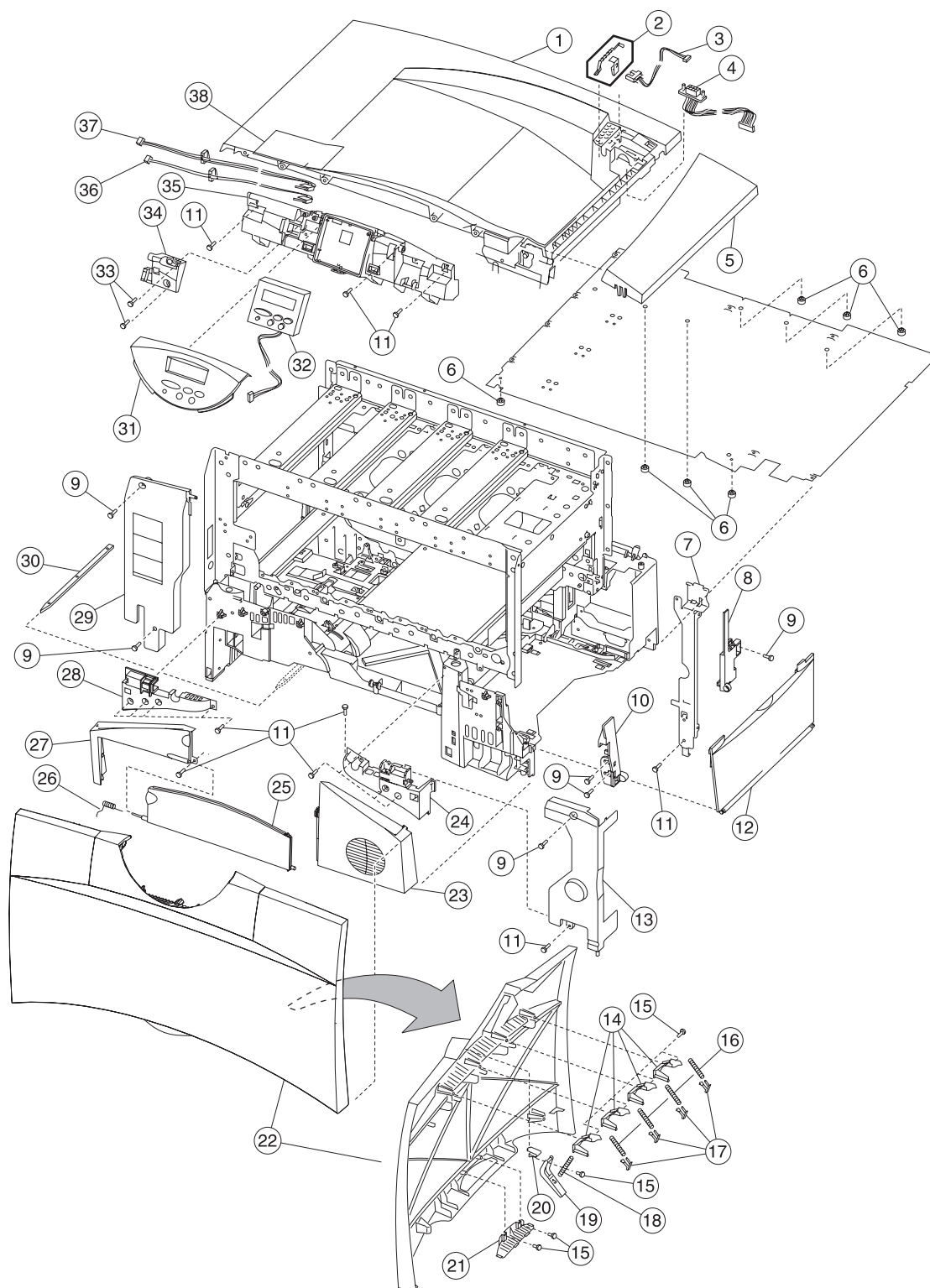


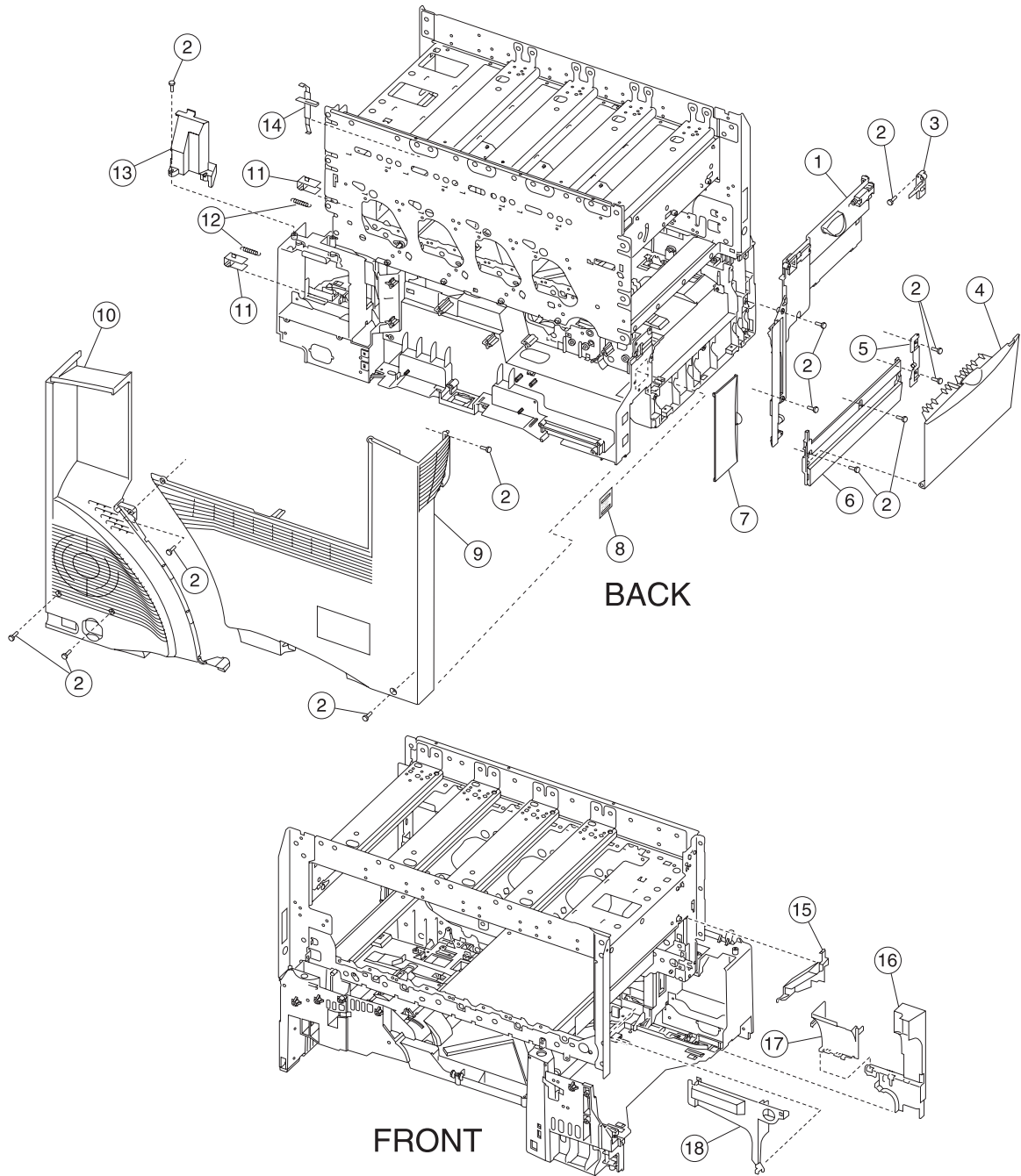
Assembly 1: Covers



Assembly 1: Covers

Asm— Index	Part number	Units	Description
1—1	12G6410	1	Top cover assembly
2	12G6507	1	250 output flag, includes flag retainer
3	12G6506	1	Bin full sensor
4	12G6319	1	Cable, options - stacker
5	12G6409	1	Redrive cap cover assembly
6	12G6380	7	Machine pad
7	12G6389	1	Top front support bracket
8	12G6396	6	Right rear cover
9		6	Screw, PP 12G6530
10	12G6393	1	Right front cover
11		18	Screw, PP 12G6309
12	12G6356	1	Lower right door assembly
13	12G6405	1	Front right light shield cover
14	56P2216	4	Shield, door spring
15		7	Screw, PP 56P2220
16	12G6376	4	Spring, rear hold down
17	12G6347	1	Front hold down bellcrank
18	56P2246	1	Detent spring
19	56P2218	1	Detent, front access door
20	56P2219	1	Housing, front access door
21	56P2217	1	Handle, front access door
22	12G6357	1	Front cover assembly
23	12G6394	1	Front lower right cover
24	12G6411	1	Front right handle cover assembly
25	12G6391	1	Paper path access door
26	12G6403	1	Spring, paper path access door
27	12G6388	1	Front lower left cover
28	12G6412	1	Front left handle cover assembly
29	12G6404	1	Left front light shield cover
30	56P1277	1	Paper tray guide
31	12G6402	1	Operator panel bezel with logos
32	12G6344	1	Operator panel assembly, low volt
32	12G6345	1	Operator panel assembly, high volt
33		2	Screw, PP 12G6532
34	12G6399	1	Front upper pivot cover
35	12G6397	1	Front access door support
36	12G6504	1	Cable, HVPS interlock/cover open (2-wire)
37	12G6503	1	Cable, printhead interlock/cover open (3-wire)
38	56P2489	1	Label, top paper jam

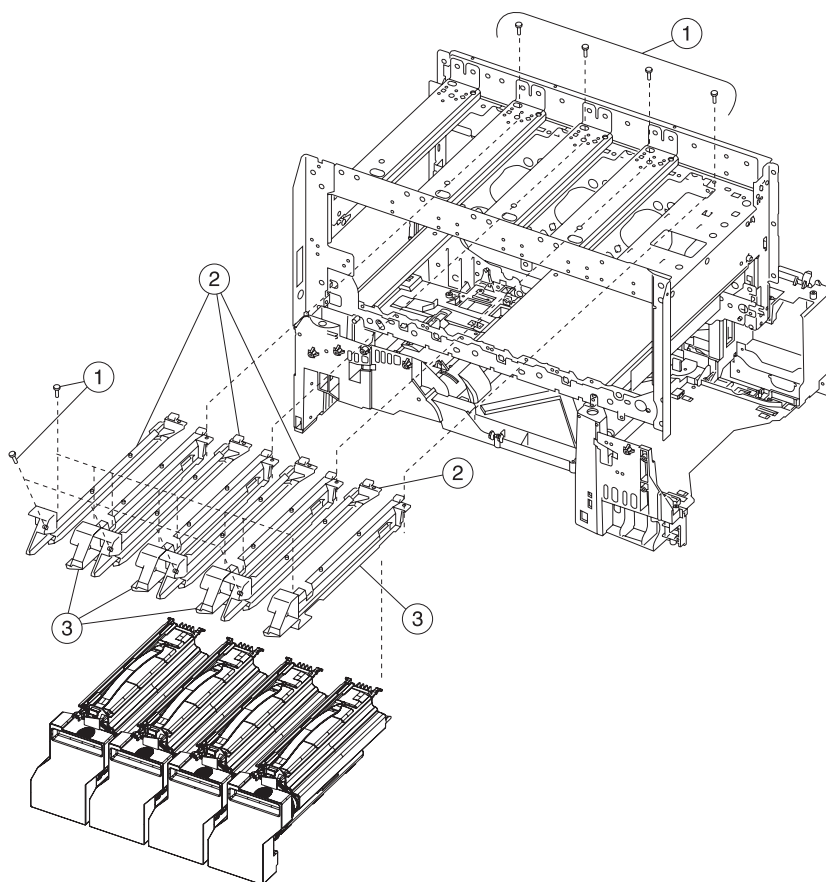
Assembly 1.1: Covers



Assembly 1.1: Covers

Asm- Index	Part number	Units	Description
1.1-1	12G6408	1	Left upper cover assembly
2		14	Screw, PP 12G6309
3	12G6392	1	Left upper pivot cover
4	12G6485	1	Lower access jam door assembly
5	12G6398	1	Left lower pivot cover
6	12G6395	1	Cover, left lower
7	12G6400	1	Waste container door
8	12G6339	1	Blank, TLI/SN label
9	12G6390	1	Rear cover
10	12G6401	1	Rear fan cover
11	12G6383	2	Fuser latch slide
12	12G6384	2	Fuser latch slide spring
13	12G6340	1	Fuser top duct
14	12G6386	1	Duplex actuator arm
15	12G6360	1	Fuser wall duct
16	12G6358	1	Fuser bottom duct
17	56P2290	1	Fuser left duct
18	56P2291	1	Redrive belt cover duct
NS	12G6510	6	Cable tie (6 in pack)
NS	12G6511	2	Cable mount

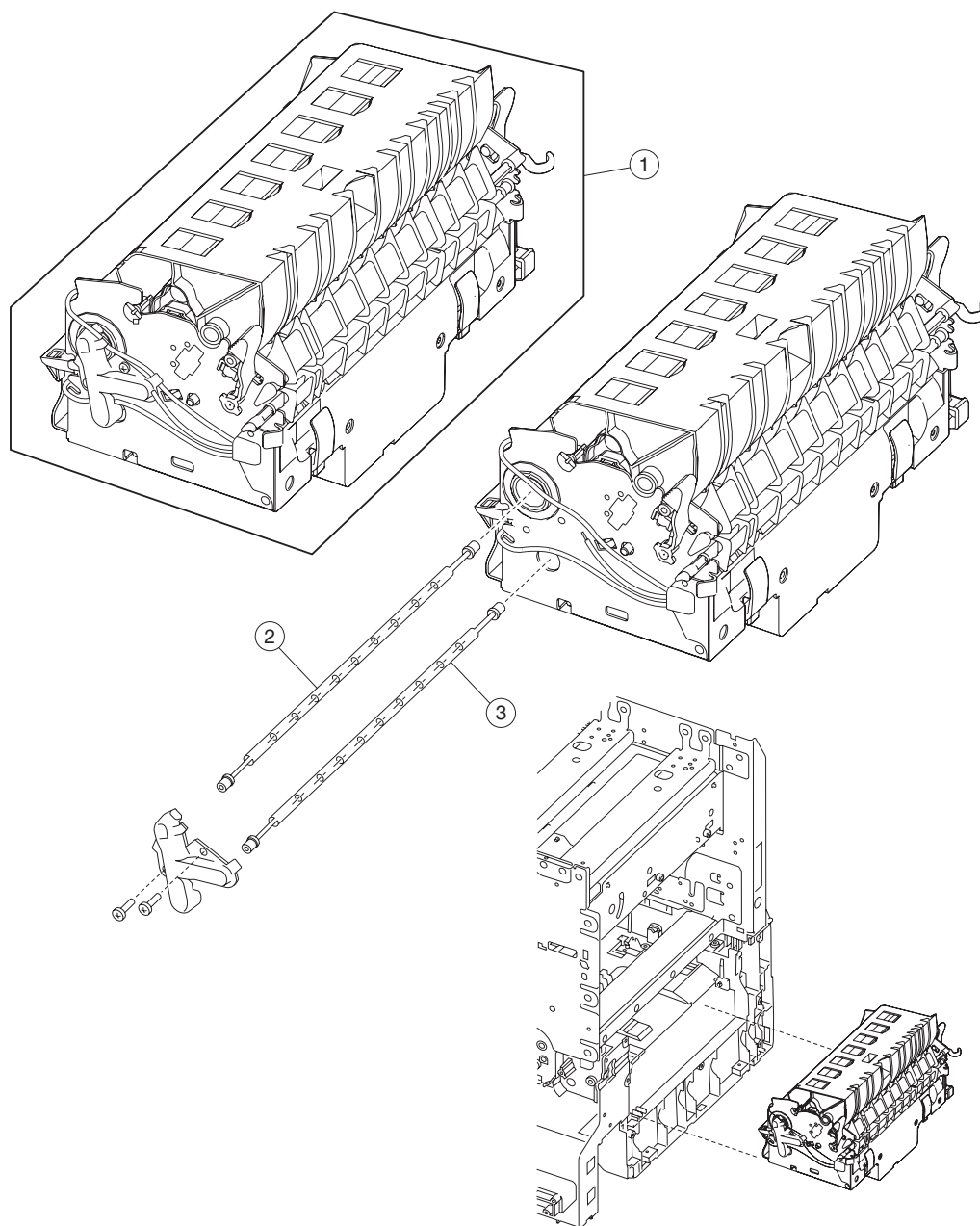
Assembly 2: Cartridge mounting



Assembly 2: Cartridge mounting

Asm- Index	Part number	Units	Description
2-1		16	Screw, PP 12G6532
2	12G6535	4	Guide assembly, left side
3	12G6536	4	Guide assembly, right side

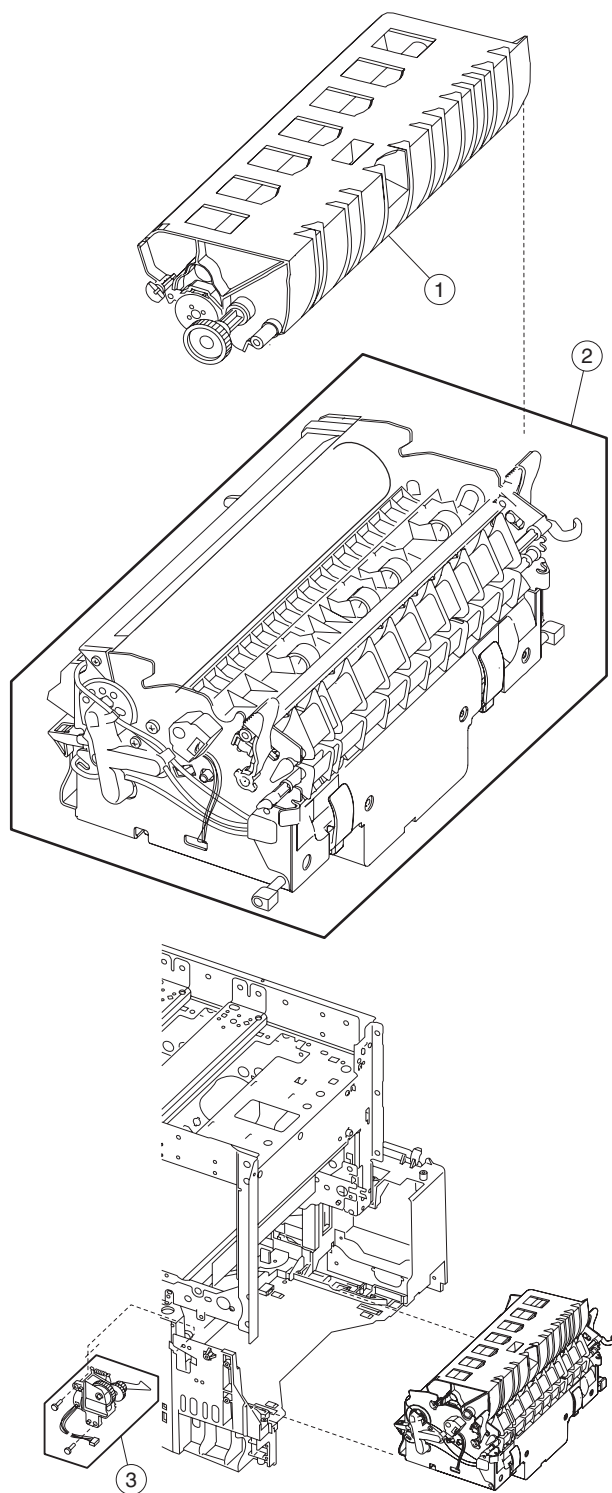
Assembly 3: Fuser



Assembly 3: Fuser

Asm- Index	Part Number	Units	Description
3—1	12G6495	1	Fuser assembly 100V 500W
1	12G6301	1	Fuser assembly 115V 500W
1	12G6302	1	Fuser assembly 220V 500W
2	12G6516	1	Fuser lamp, 100V 500W hot roll
2	12G6337	1	Fuser lamp, 115V 500W hot roll
2	12G6341	1	Fuser lamp, 220V 500W hot roll
3	12G6517		Fuser lamp, 100V 400W backup roll
3	12G6338	1	Fuser lamp, 115V 400W backup roll
3	12G6342	1	Fuser lamp, 220V 400W backup roll

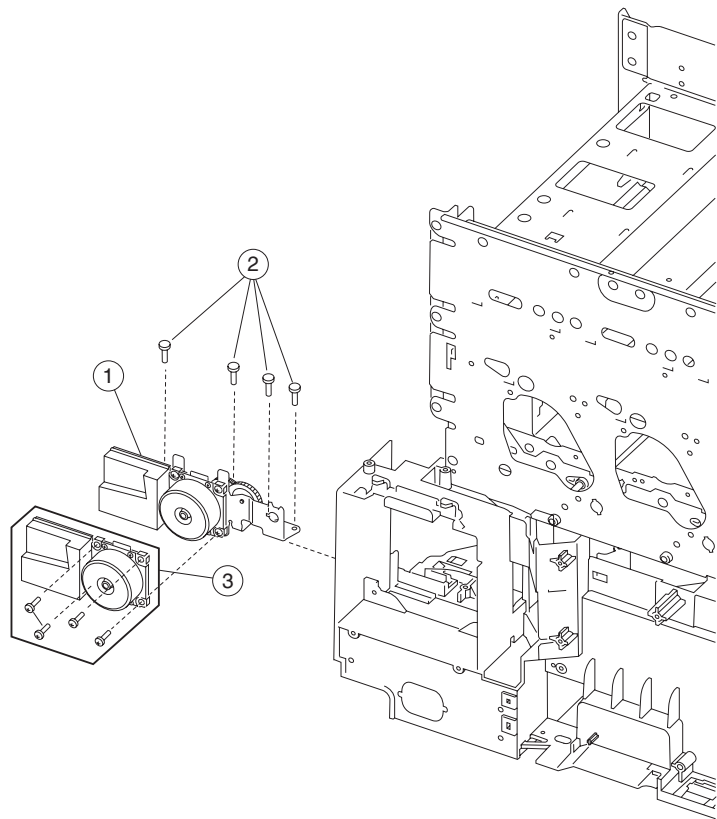
Assembly 3.1: Fuser (web oiler)



Assembly 3.1: Fuser

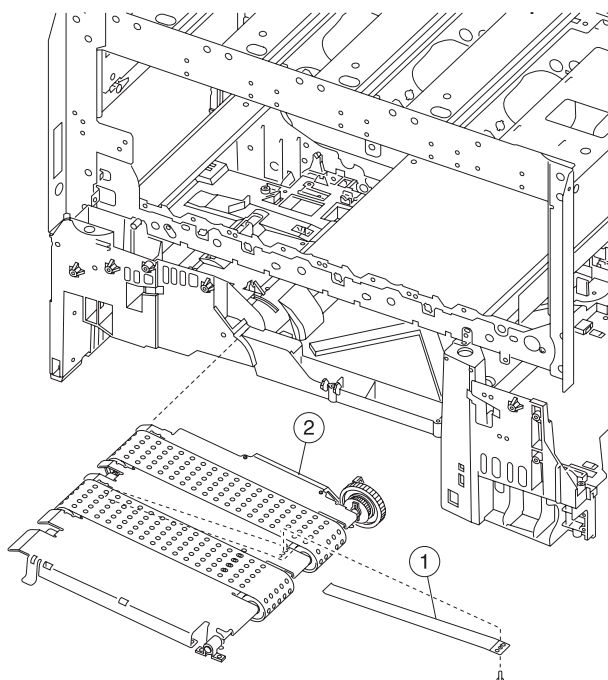
Asm- Index	Part Number	Units	Description
3.1-1	12G6545	1	Web oiler assembly
2	12G6495	1	Fuser assembly, web oiler 100V 500W
2	12G6514	1	Fuser assembly, web oiler 115V 500W
2	12G6515	1	Fuser assembly, web oiler 220V 500W
3	12G6543	1	Web oiler index drive assembly

Assembly 4: Fuser drive



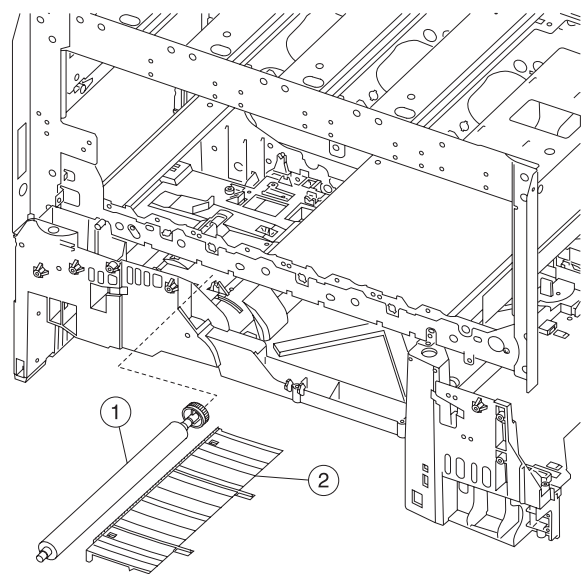
Asm- Index	Part Number	Units	Description
4-1	56P1213	1	Fuser drive assembly w/motor
2		4	Screws PP 12G6309
3	56P1238	1	Fuser drive motor
		4	Screws, motor mounting

Assembly 5: Vacuum transport belt assembly



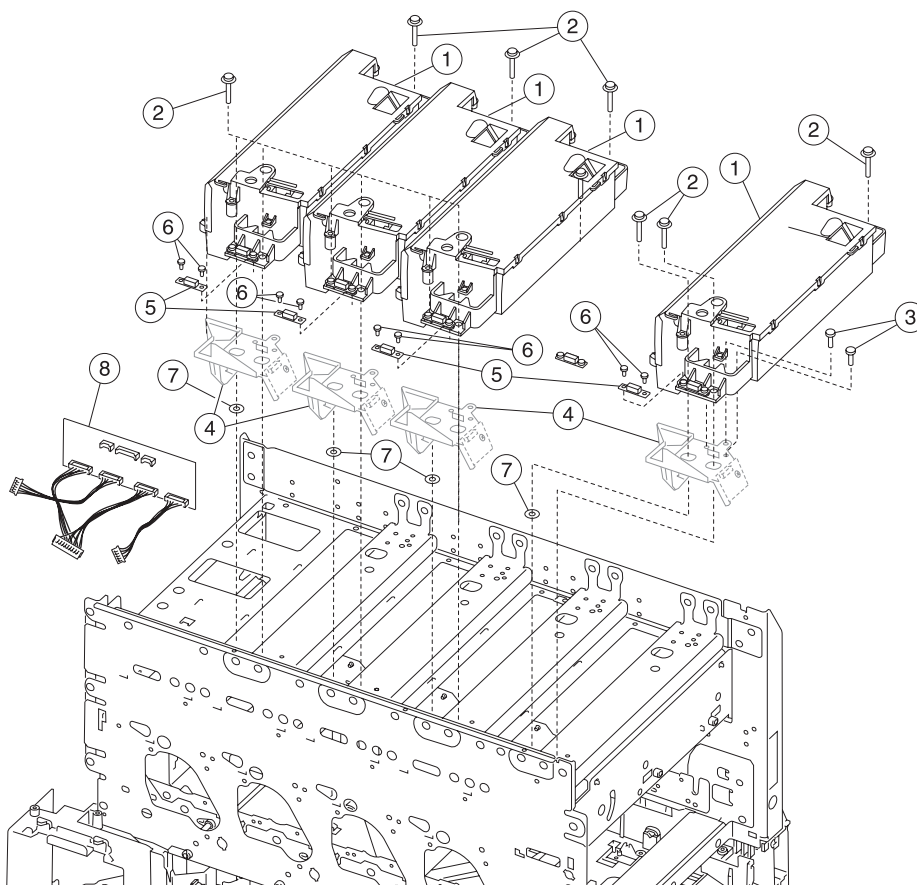
Asm-Index	Part Number	Units	Description
5-1	12G6491	1	Jam access spring
2	12G6489	1	Vacuum transport belt assembly

Assembly 6: Transfer



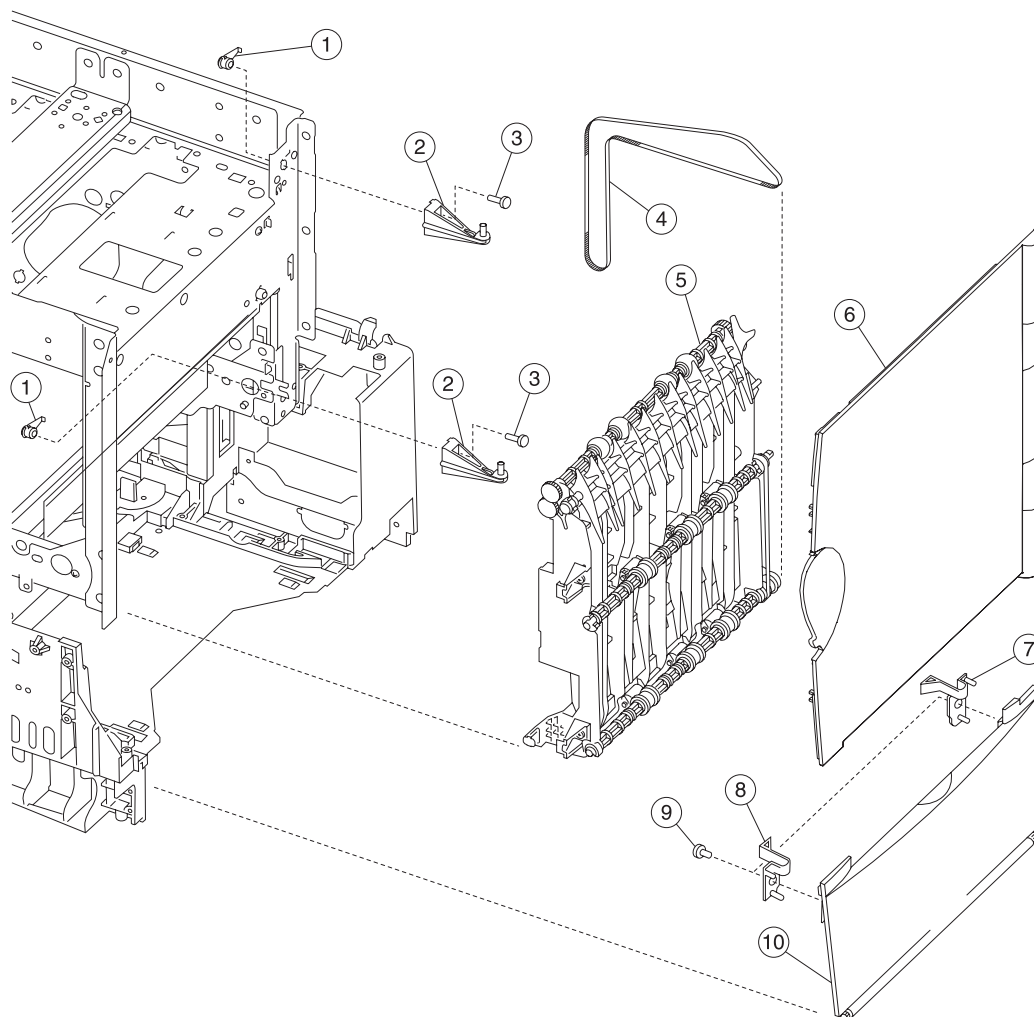
Asm- Index	Part Number	Units	Description
6-1	12G6303	1	Second transfer roll
2	12G6488	1	Transfer plate assembly

Assembly 7: Printheads



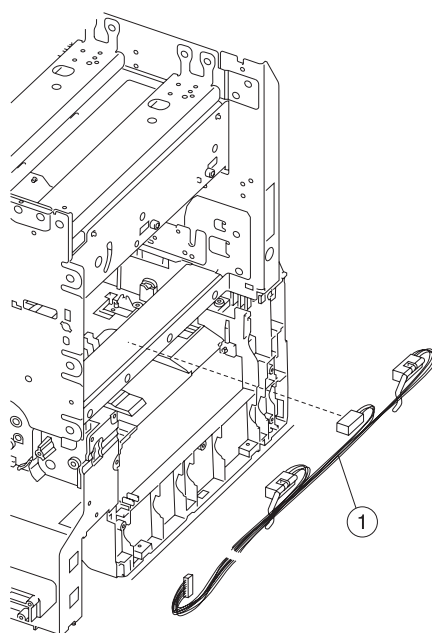
Asm- Index	Part Number	Units	Description
7-1	12G6322	4	Printhead assembly (Do not replace more than one printhead at a time.)
2		12	Screw, PP 12G6534
3		12	Screw, PP 12G6539
4		4	PSD assembly (order 7-5, thermistor card, when replacing this assembly)
5	56P1198	4	Thermistor card
6		8	Screw, PP 12G6533
7	56P2292	4	Printhead spacer
8	56P2296	1	Card assembly, printhead diagnostic aid

Assembly 8: Paper feed output (redrive)



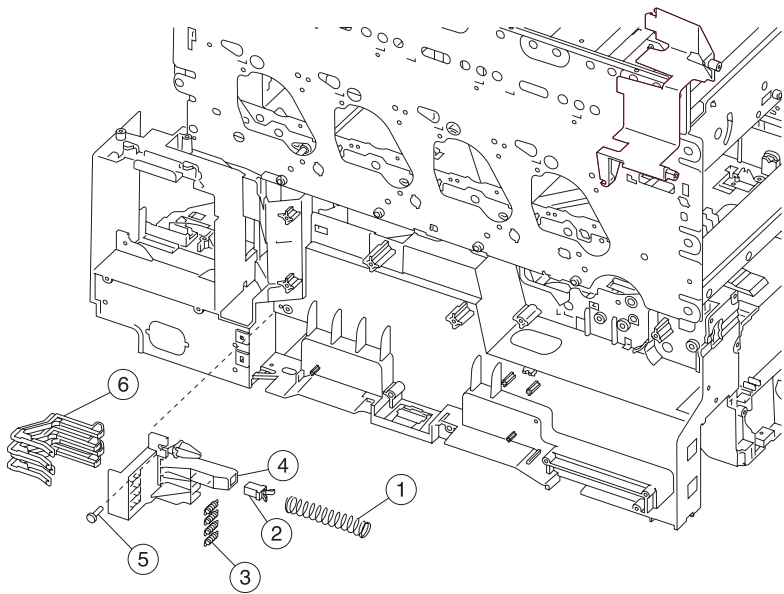
Asm-Index	Part number	Units	Description
8-1	56P0167	8	Anchor, bracket mounting
2	12G6493	2	Upper door hinge
3		2	Screw, PP 12G6533
4	56P2204	1	Redrive belt 300 T
5	12G6492	1	Redrive assembly
6	12G6355	1	Redrive door
7	12G6513	1	Lower rear door latch
8	12G6512	1	Lower front door latch
9		2	Screw, PP 12G6530
10	12G6356	1	Door assembly, lower right

Assembly 9: Paper feed input



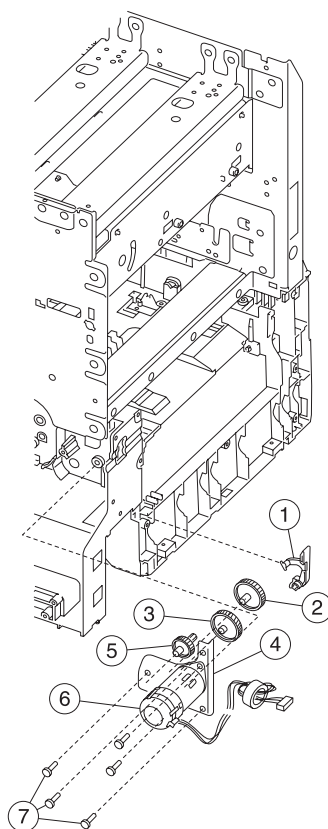
Asm- Index	Part number	Units	Description
9-1	12G6486	1	S2/transparency/narrow media sensor assembly

Assembly 10: Paper size sensing



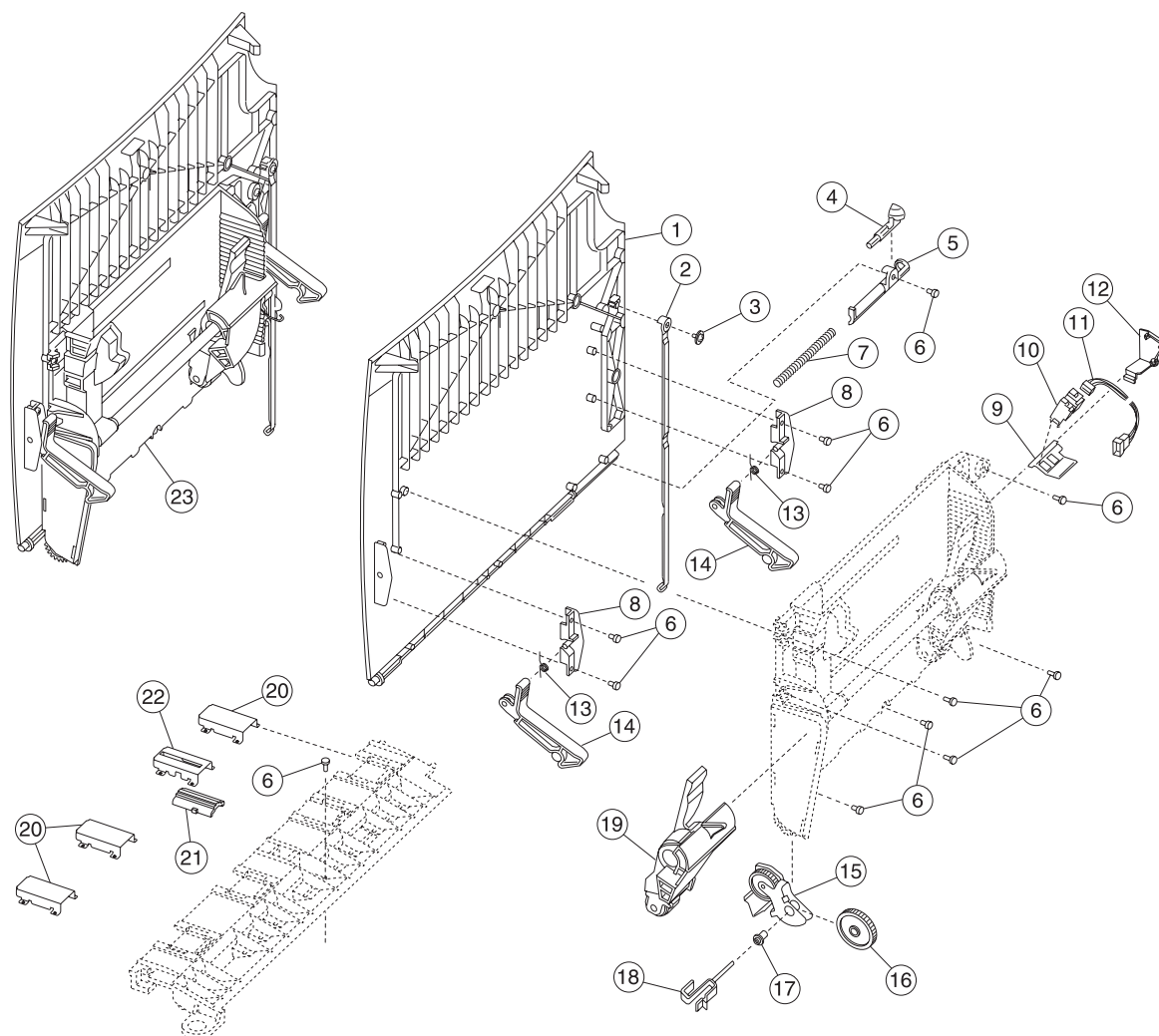
Asm- Index	Part Number	Units	Description
10-1	12G6470	1	Waste container latch spring
2	12G6469	1	Waste container latch
3	12G6467	4	Paper size sensing spring
4	12G6468	1	Paper size sensing bracket
5		1	Screw, paper size sensing assembly mounting PP 12G6531
6	12G6466	4	Paper size sensing link

Assembly 11: Paper feed transport



Asm- Index	Part Number	Units	Description
11-1	56P2194	1	Nip relief handle
2	12G6483	1	Gear, staging idler
3	12G6482	1	Gear, staging reduction #1
4	12G6481	1	Registration plate assembly
5	12G6484	1	Gear, reference plate drive
6	12G6480	1	Registration motor
7		3	Registration motor assembly screw, PP 12G6309

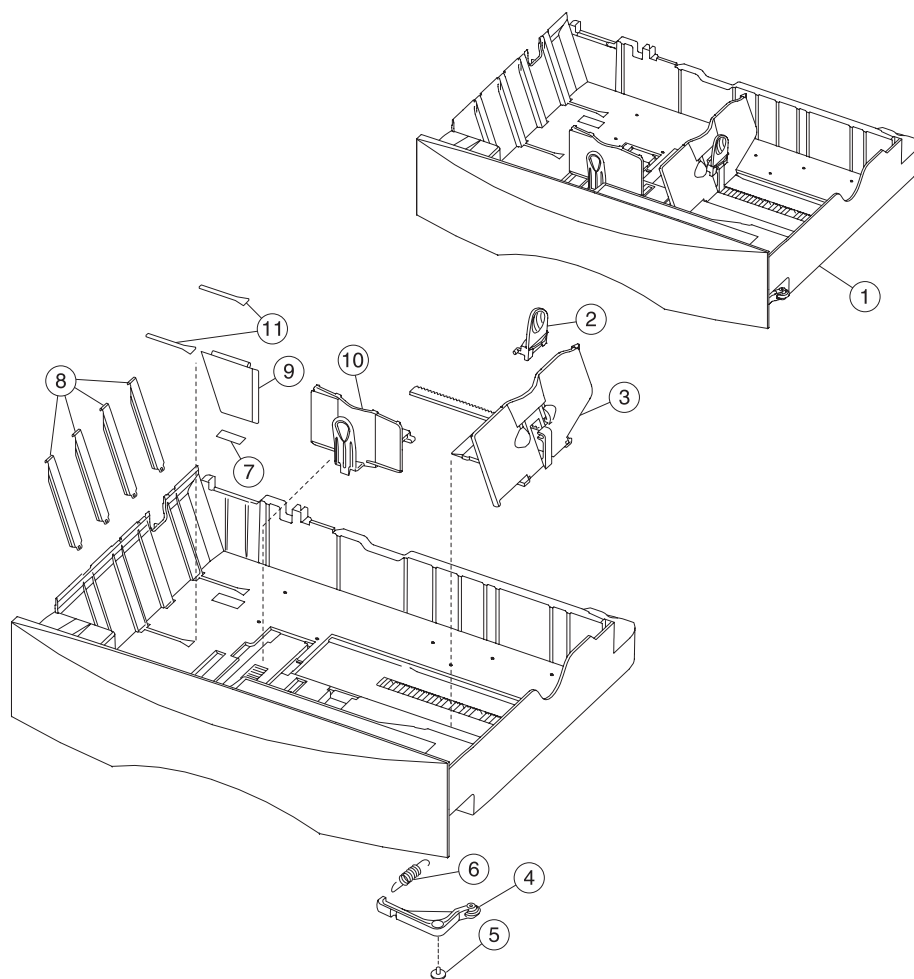
Assembly 12: Multipurpose feeder (MPF)



Assembly 12: Multipurpose Feeder (MPF)

Asm- Index	Part number	Units	Description
12-1	12G6452	1	MP feeder door cover
2	12G6460	1	Door hinge restraint
3		1	Screw, PP 12G6533
4	12G6453	1	Frame bias latch
5	12G6455	1	Frame bias latch cover
6		11	Screw, PP 12G6533
7	12G6454	1	Frame bias spring
8	12G6457	2	MPF support bracket cover
9	12G6456	1	Sensor mount bracket
10	12G6461	1	Paper out/low sensor
11	12G6448	1	MPF cable
12	12G6449	1	MPF cable cover
13	12G6458	2	MPF support bracket spring
14	12G6459	2	MPF support bracket
15	12G6462	1	MPF bracket assembly
16	12G6463	1	MPF drive gear
17	12G6465	1	MPF drive gear bushing
18	12G6464	1	MPF drive gear shaft
19	12G6451	1	MPF autocompensator pick assembly
20	12G6354	3	Rib housing
21	12G6447	1	Friction buckler
22	12G6346	1	Buckler housing
23	12G6450	1	MPF door assembly

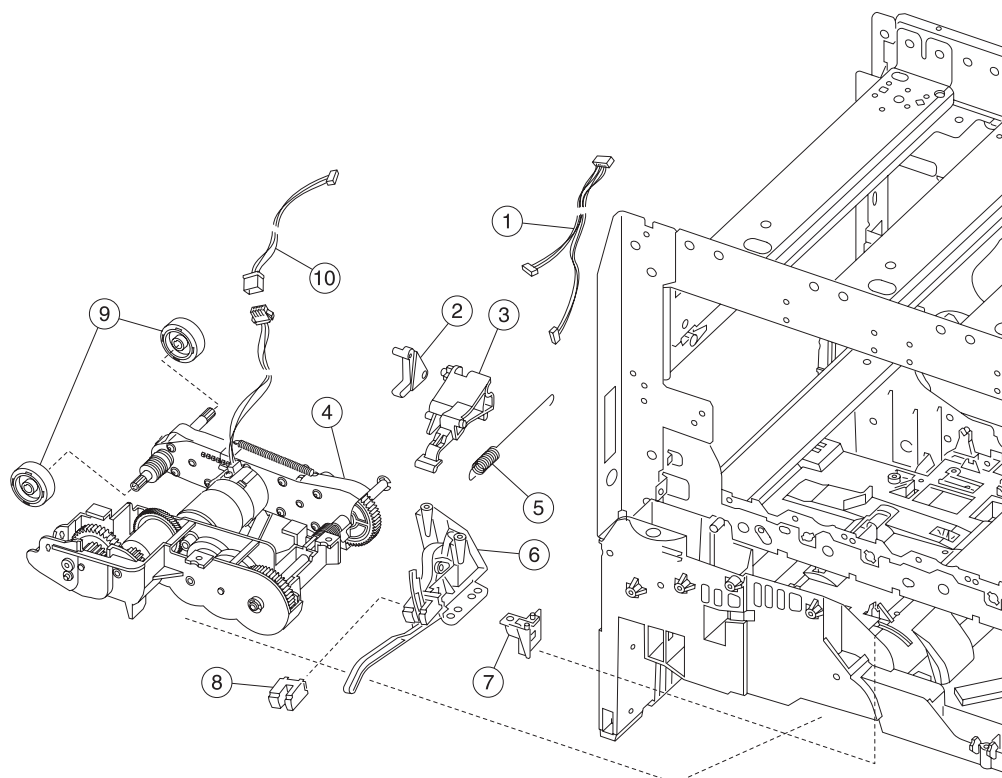
Assembly 13: 500-sheet integrated tray



Assembly 13: 500-sheet integrated tray

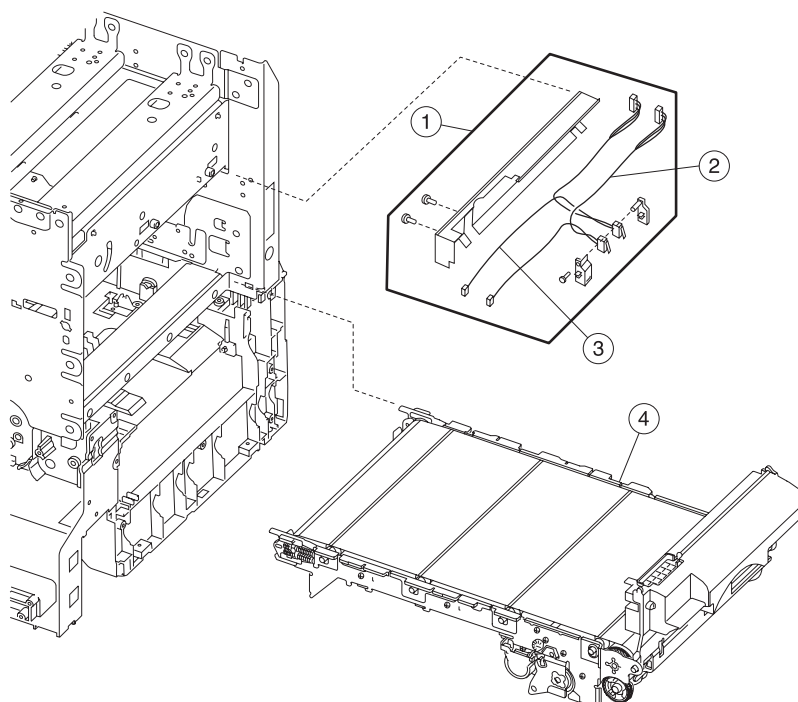
Asm- Index	Part number	Units	Description
13-1	12G6416	1	500-Sheet tray assembly
2	12G6419	1	Back restraint latch
3	12G6418	1	Back restraint
4	12G6425	1	Tray bias bellcrank assembly
5		1	Screw, PP 12G6533
6	12G6426	1	Tray bias spring
7	12G6568	1	Reflector label
8	12G6421	4	Wear strip
9	12G6420	1	Tray wear clip
10	12G6417	1	Side restraint
11	56P1504	2	Active restraint pad

Assembly 14: Autocompensator assembly



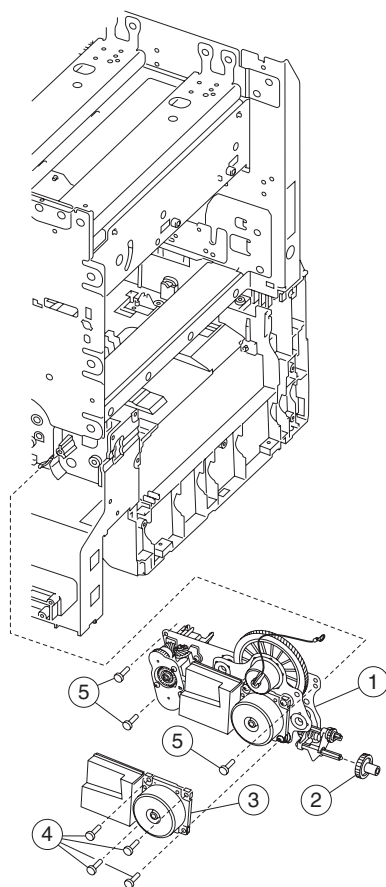
Asm-Index	Part Number	Units	Description
14-1	56P0551	1	Cable, paper media low/out
2	12G6471	1	Tray interlock bellcrank
3	12G6558	1	Pick arm lift bellcrank
4	12G6427	1	Pick assembly 500-tray
5	12G6557	1	Bellcrank lift spring
6	12G6476	1	Paper level sensing assembly
7	12G6472	1	Tray interlock bracket
8	12G6461	1	Sensor, paper out/low
9	99A0070	2	Pick rolls (2 each per package)
10	56P0552	1	Cable, pick motor extension
NS	56P1237	1	Autocomp shaft assembly

Assembly 15: ITU assembly



Asm-Index	Part Number	Units	Description
15-1	12G6413	1	ITU light shield assembly
2	12G6503	1	Cable, printhead interlock/cover open (3-wire)
3	12G6504	1	Cable, HVPS interlock/cover open (2-wire)
4	56P1295	1	ITU assembly

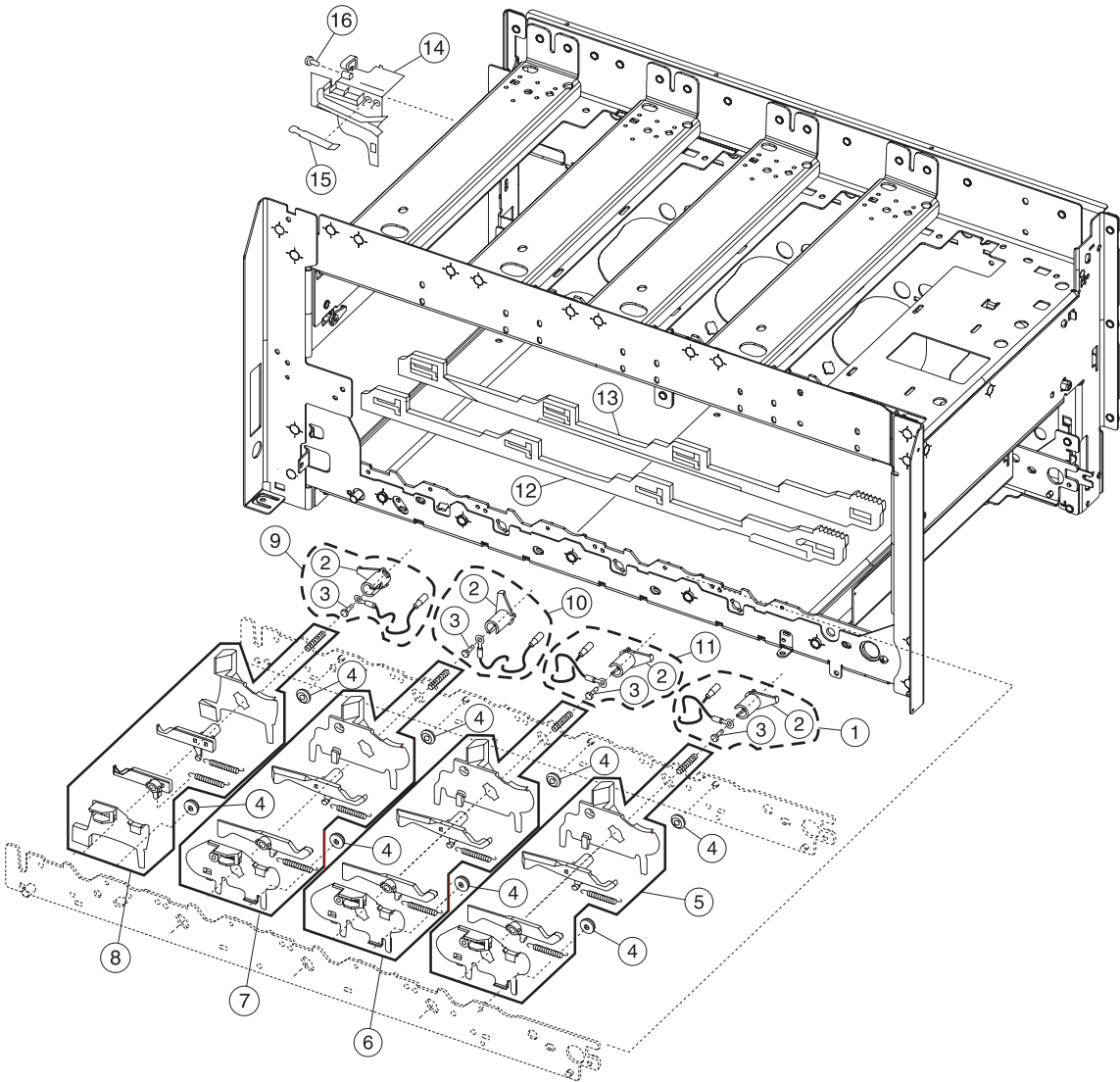
Assembly 16: ITU drive assembly



Assembly 16: ITU drive assembly

Asm-index	Part number	Units	Description
16—1	56P1216	1	ITU motor drive assembly with SKC motor
2	12G6385	1	#58 Gear
3	56P0568	1	ITU drive motor, SKC
4		4	Screw, PP 12G6309 (ITU drive motor to ITU drive assembly)
5		4	Screw, PP 12G6309 (ITU drive assembly lower frame)

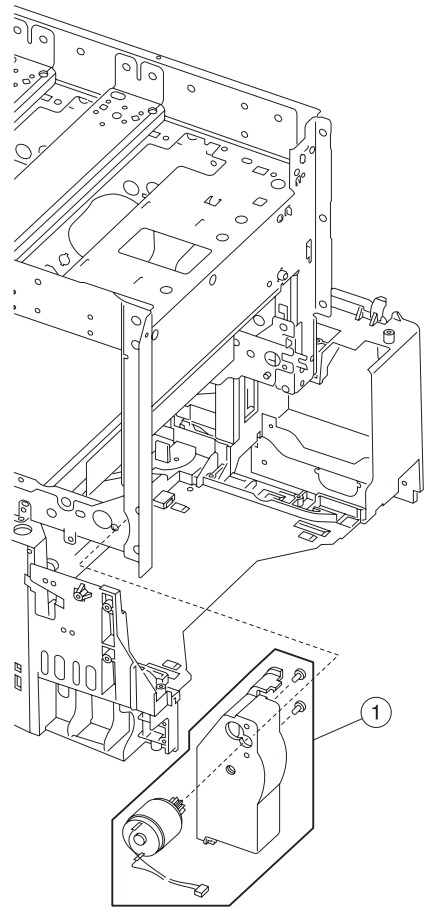
Assembly 17: ITU loading



Assembly 17: ITU loading

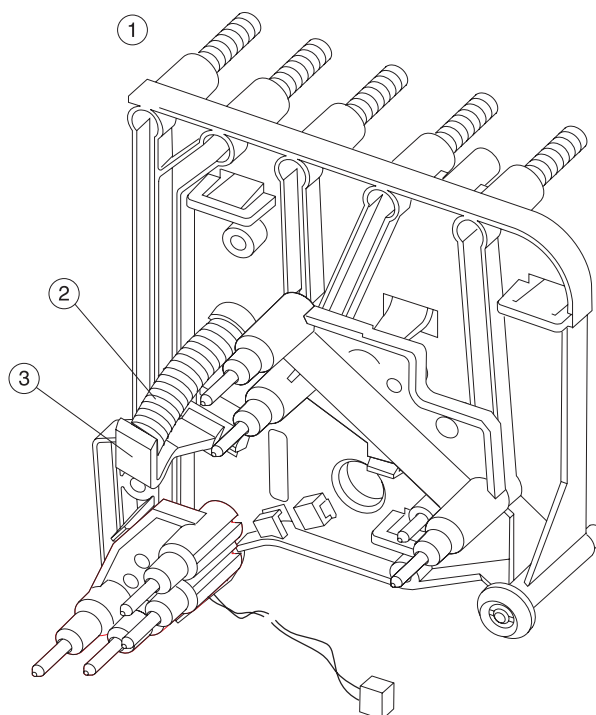
Asm— Index	Part number	Units	Description
17—1	12G6546	1	Yellow terminal contact assembly
2	12G6442	4	Terminal, contact spring
3		4	Screw PP 12G6533
4	12G6353	8	Cartridge support roller
5	56P1495	1	Parts packet, ITU loading - yellow, including <ul style="list-style-type: none"> - Yellow BOR spring - Rear block guide - Rear transfer bellcrank - Front V block guide - Front transfer bellcrank - High voltage contact spring
6	56P1496	1	Parts packet, ITU loading - cyan, including <ul style="list-style-type: none"> - Cyan BOR spring - Rear V block guide - Rear transfer bellcrank - Front V block guide - Front transfer bellcrank - High voltage contact spring
7	56P1497	1	Parts packet, ITU loading - magenta, including <ul style="list-style-type: none"> - Magenta BOR spring - Rear V block guide - Rear transfer bellcrank - Front V block guide - Front transfer bellcrank - High voltage contact spring
8	56P1498	1	Parts packet, ITU loading - black, including <ul style="list-style-type: none"> - Black BOR spring - Rear block guide - Rear transfer bellcrank - Front V block guide - Front transfer bellcrank - High voltage contact spring
9	12G6439	1	Black terminal contact assembly
10	12G6440	1	Magenta terminal contact assembly
11	12G6441	1	Cyan terminal contact assembly
12	56P0594	1	Cam, BOR front
13	56P0595	1	Cam, BOR rear
14	56P0560	1	Rear ITU guide
15	12G6443	2	ITU bias spring
16		1	Screw, PP 12G6309

Assembly 18: BOR drive assembly



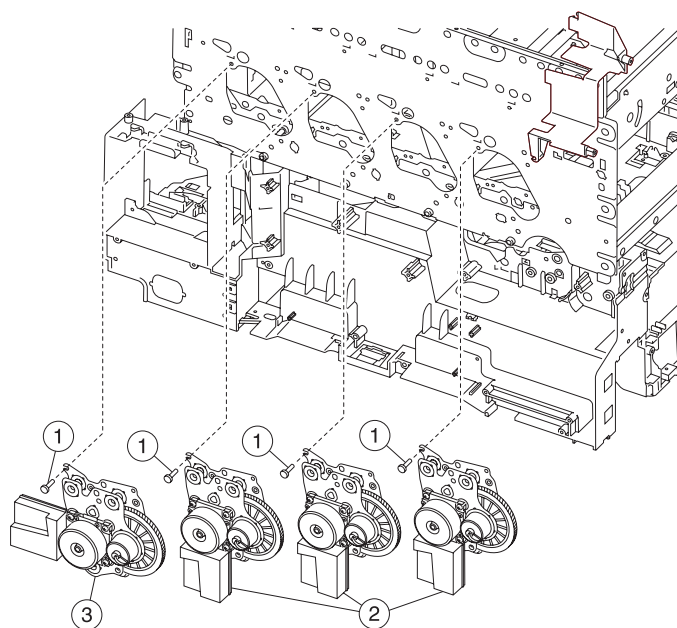
Asm— Index	Part number	Units	Description
18—1	12G6446	1	BOR housing assembly with motor

Assembly 19: Cartridge contact assembly



Asm-Index	Part number	Units	Description
19-1	56P0310	1	Cartridge contact assembly, complete
2	12G6377	1	Rear hold down bellcrank
3	12G6376	1	Rear hold down spring

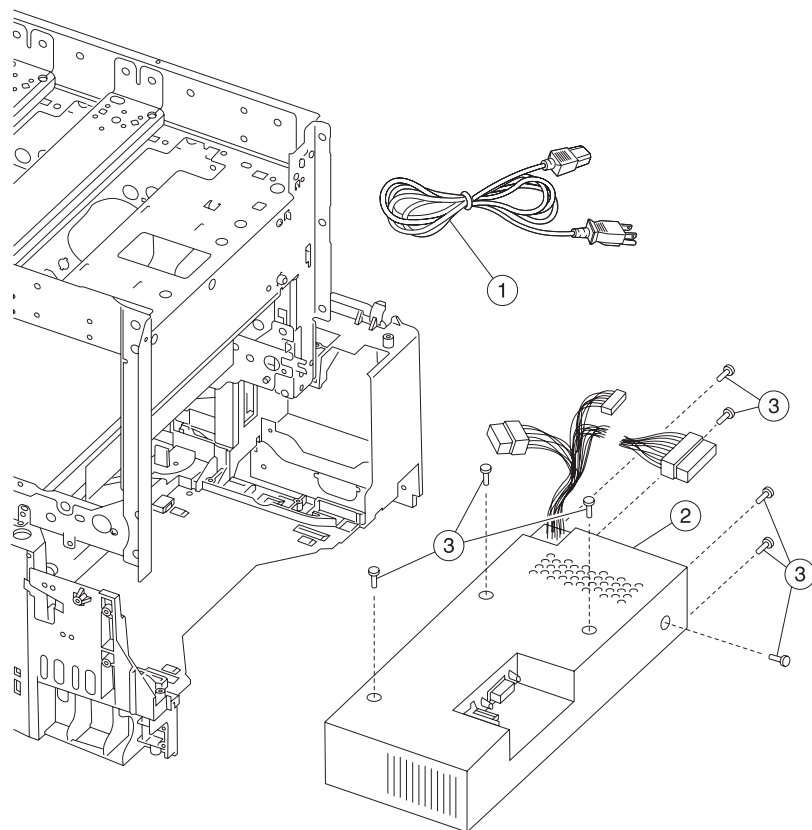
Assembly 20: Cartridge drive assembly



Assembly 20: Cartridge drive assembly

Asm— Index	Part Number	Units	Description
20—1		4	Screw, PP 12G6530
2	56P1214	3	Cartridge drive assembly, cyan/magenta/black
3	56P1215	1	Cartridge drive assembly, yellow

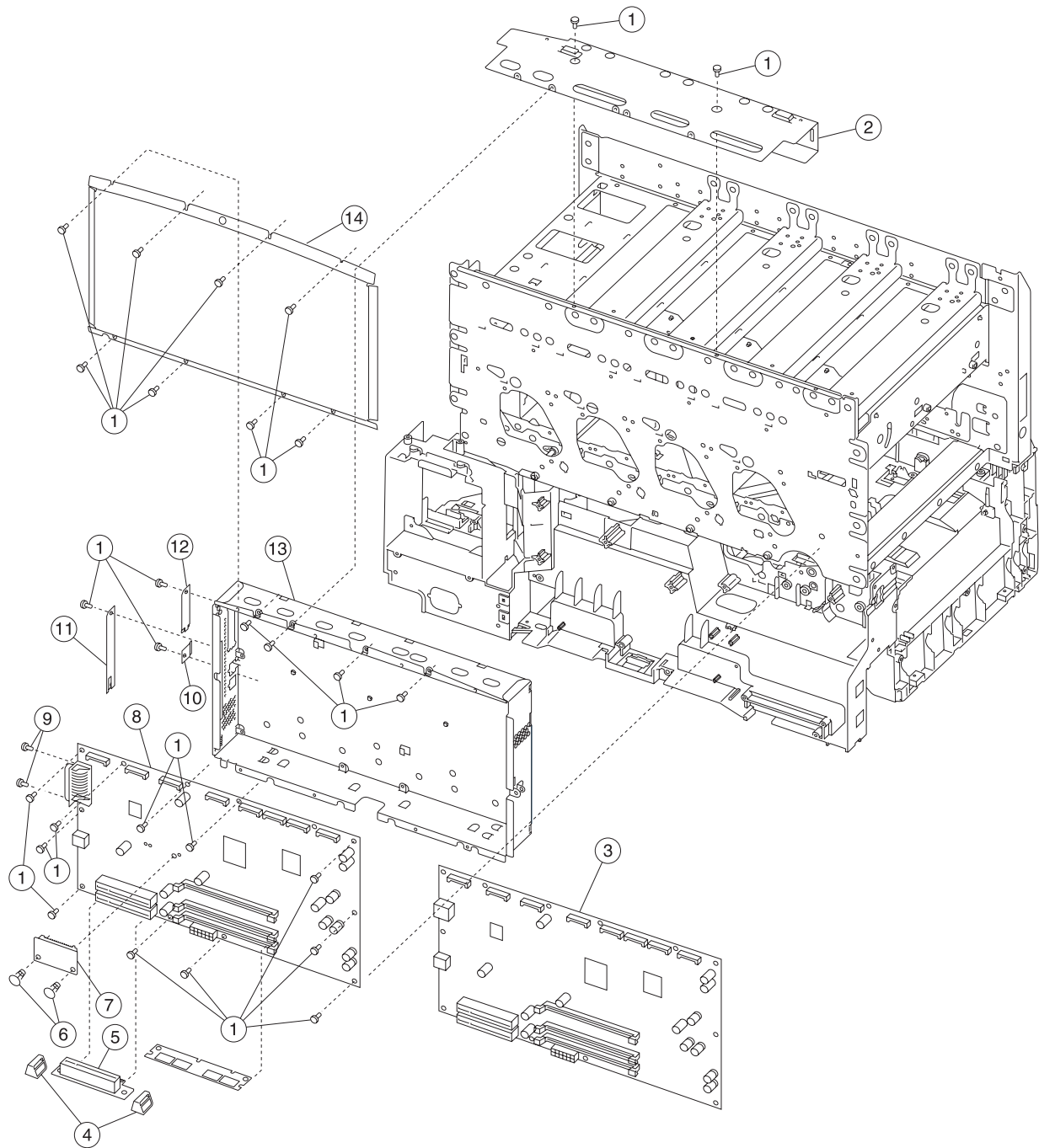
Assembly 21: Electronics



Assembly 21: Electronics

Asm- Index	Part number	Units	Description
21-1	11A9095	1	Power cord set U.S., Canada (LV), Brazil (LV), Colombia (LV), Costa Rica (LV), Dominican Republic (LV), Ecuador (LV), El Salvador (LV), Guatemala (LV), Honduras (LV), Nicaragua (LV), Panama (LV), Venezuela (LV), Puerto Rico (LV), Virgin Islands (LV) Mexico (LV), Asia Pacific (English) LV, Japan (LV), Taiwan (LV), Saudi Arabia (LV),
1	43H5544	1	Power cord set PRC (HV)
1	1339517	1	Power cord set Bolivia (HV), Peru (HV)
1	1339519	1	Power cord set Kuwait (HV), Bahrain (HV), Qatar (HV), UAE (HV), Oman (HV) Pakistan (HV), Yemen (HV), Iraq (HV), Libya (HV), Cyprus (HV), UK (HV), Ireland (HV)
1	1339520	1	Power cord set Brazil (HV), Paraguay (HV), Uruguay (HV), African Countries Denmark (HV), Austria (HV), Czech (HV) Slovak countries (HV), Greece (HV), Hungary (HV), Finland (HV), Norway (HV), Sweden (HV), France (HV), Belgium (HV), Netherlands (HV), Germany (HV), Italy (HV), Lebanon (HV), Syria (HV), Egypt (HV), Jordan (HV), Iran (HV), Euro English (HV), Albania (HV), Bosnia (HV), Bulgaria (HV), Croatia (HV), Slovenia (HV), Macedonia (HV), Yugoslavia (Serbia and Montenegro) (HV), Romania (HV), Iceland (HV) Poland (HV), Russia (HV), Turkey (HV), CIS (HV), Spain (HV), Catalan (HV), Portugal (HV),
1	1339521	1	Power cord set Israel (HV)
1	1339522	1	Power cord set Switzerland HV (French/German and Italian)
1	1339523	1	Power cord set South Africa (HV), Namibia (HV), Lesotho (HV), Botswana (HV)
1	1339524	1	Power cord set Chile (HV)
1	1339525	1	Power cord set Denmark, (HV)
1	1339544	1	Power cord set Argentina (HV)
2	12G6329	1	LVPS, 115V
2	12G6330	1	LVPS, 220V
3		8	Screw, PP 12G6540

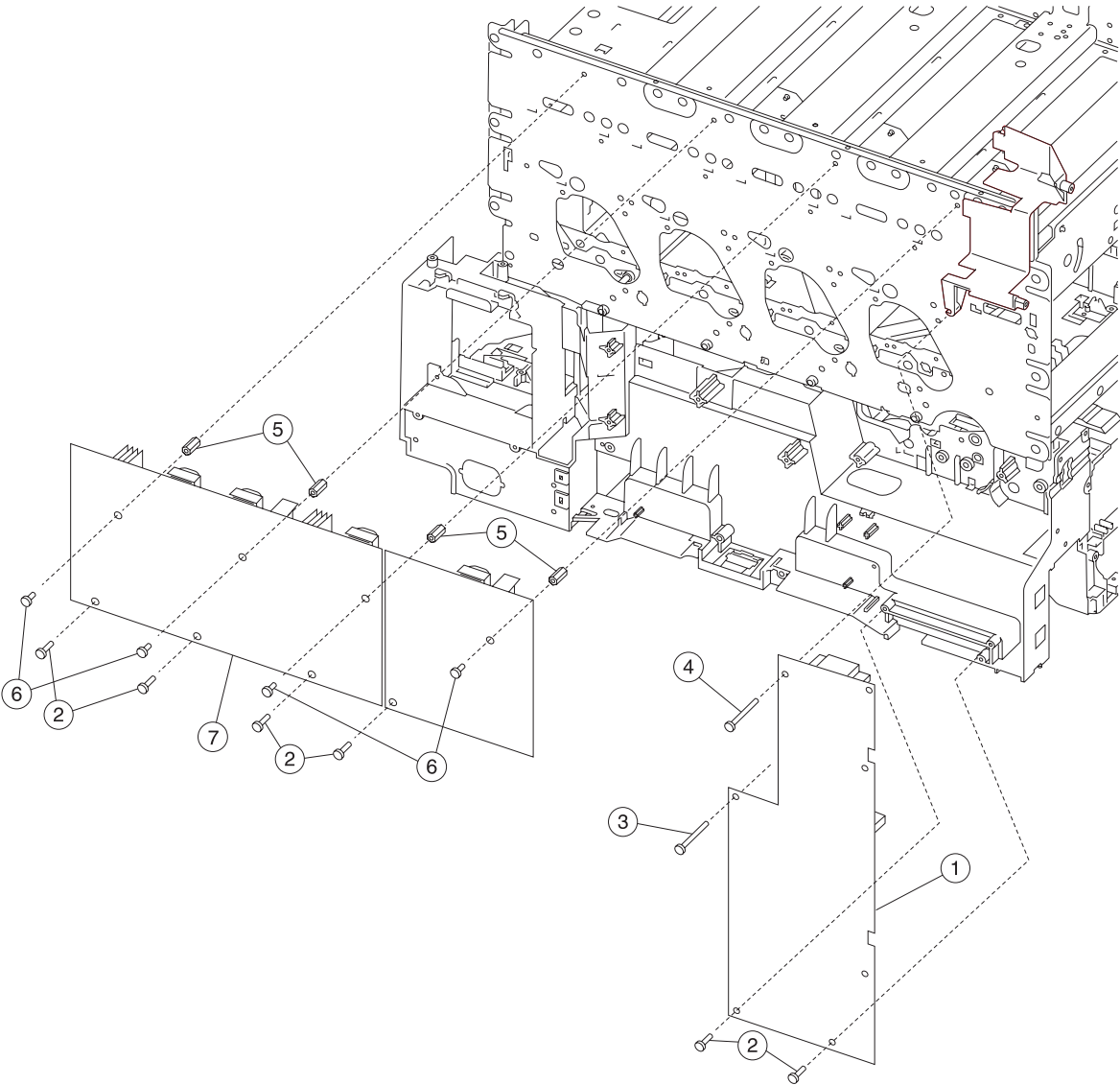
Assembly 21.1: Electronics



Assembly 21.1: Electronics

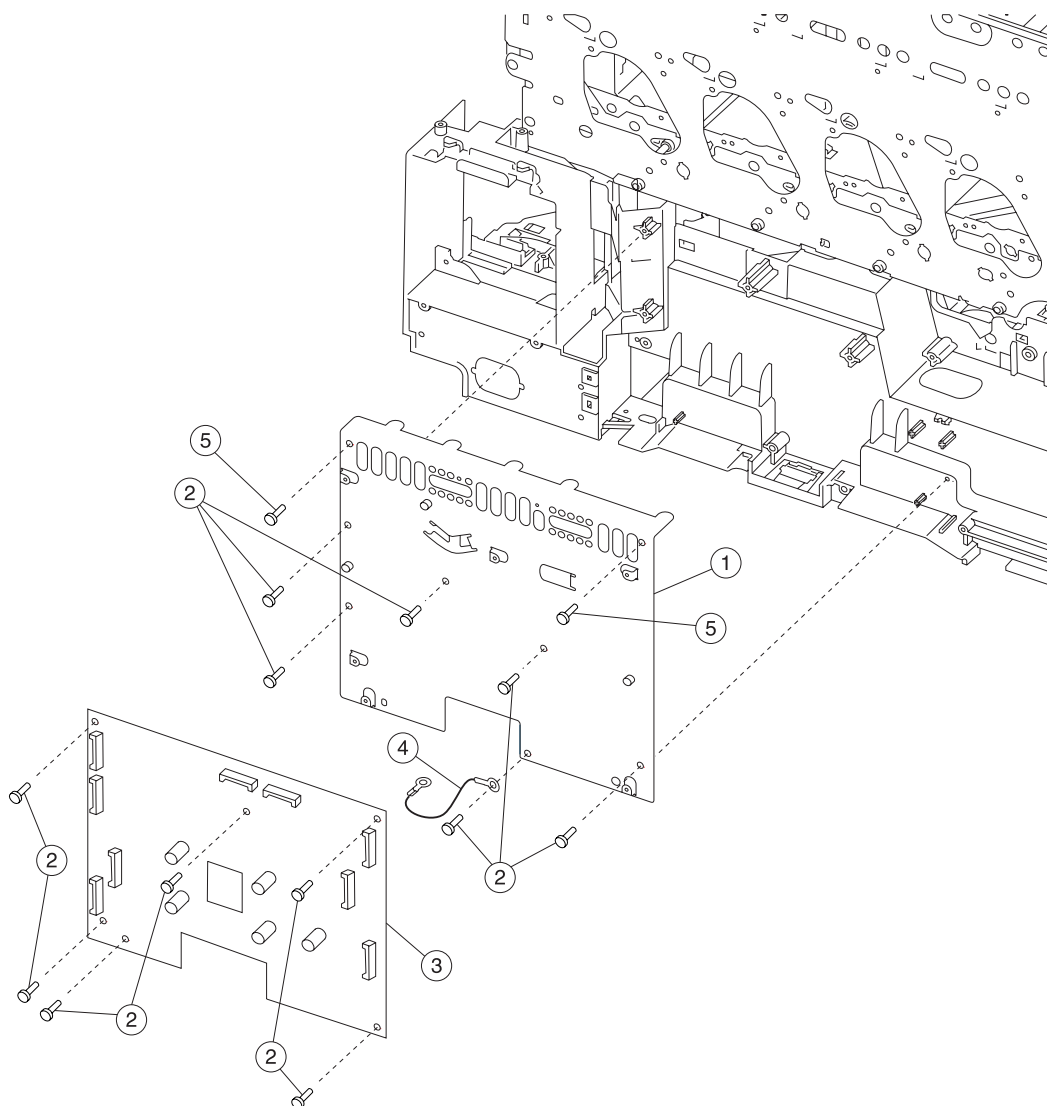
Asm— Index	Part number	Units	Description
21.1—1		22	Screw, PP 12G6309
2	12G6331	1	RIP board ground shield
3	56P1188	1	RIP board assembly - network, model 5060-002
4	12G6334	2	INA riser support bracket
5	12G6326	1	Riser card assembly w/o support brackets
6	12G6335	1	Standoff, INA RIP spacer
7	56P9910	1	SDRAM DIMM 128MB
7	12G6509	1	SDRAM DIMM 64MB
8	56P1187	1	RIP board assembly, non-network, Model 5060-001
9	99A0426	1	Screw, parallel connector mounting
10	99A1611	1	Ethernet blank shield, use with non-network RIP boards
11	99A0408	1	INA blank flat shield, use when options are not installed
12	99A2432	1	Blank parallel shield, use with network RIP boards
13	12G6333	1	RIP board shield assembly
14	12G6332	1	RIP board cover shield

Assembly 21.2: Electronics



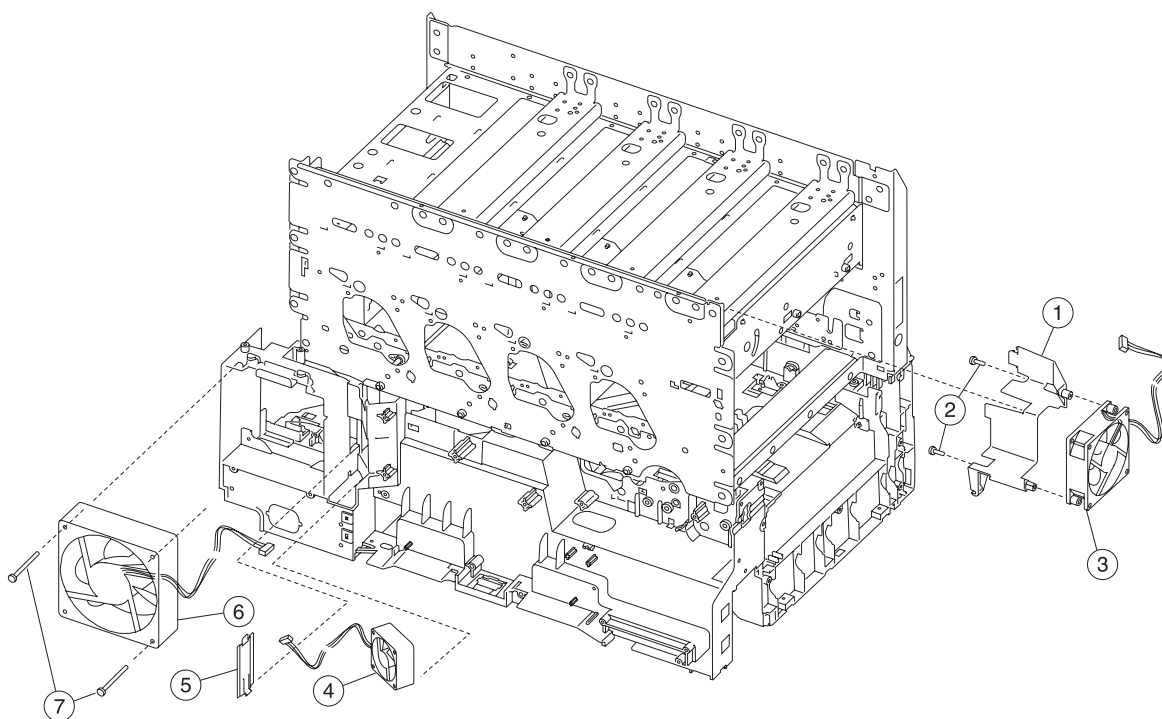
Asm- Index	Part number	Units	Description
21.2-1	12G6327	1	Transfer HVPS board
2		1	Screw, PP 12G6309
3		1	Screw, PP 12G6533
4		1	Screw, PP 12G6530
5	12G6541	4	Standoff, high voltage power supply - developer
6		4	Screw, PP 12G6540
7	12G6328	1	Developer HVPS board

Assembly 21.3: Electronics



Asm-Index	Part Number	Units	Description
21.3-1	12G6336	1	Engine board shield
2		12	Screw, PP 12G6531
3	12G6323	1	Engine board
4	12G6387	1	Ground strap
5		14	Screw, PP 12G6309

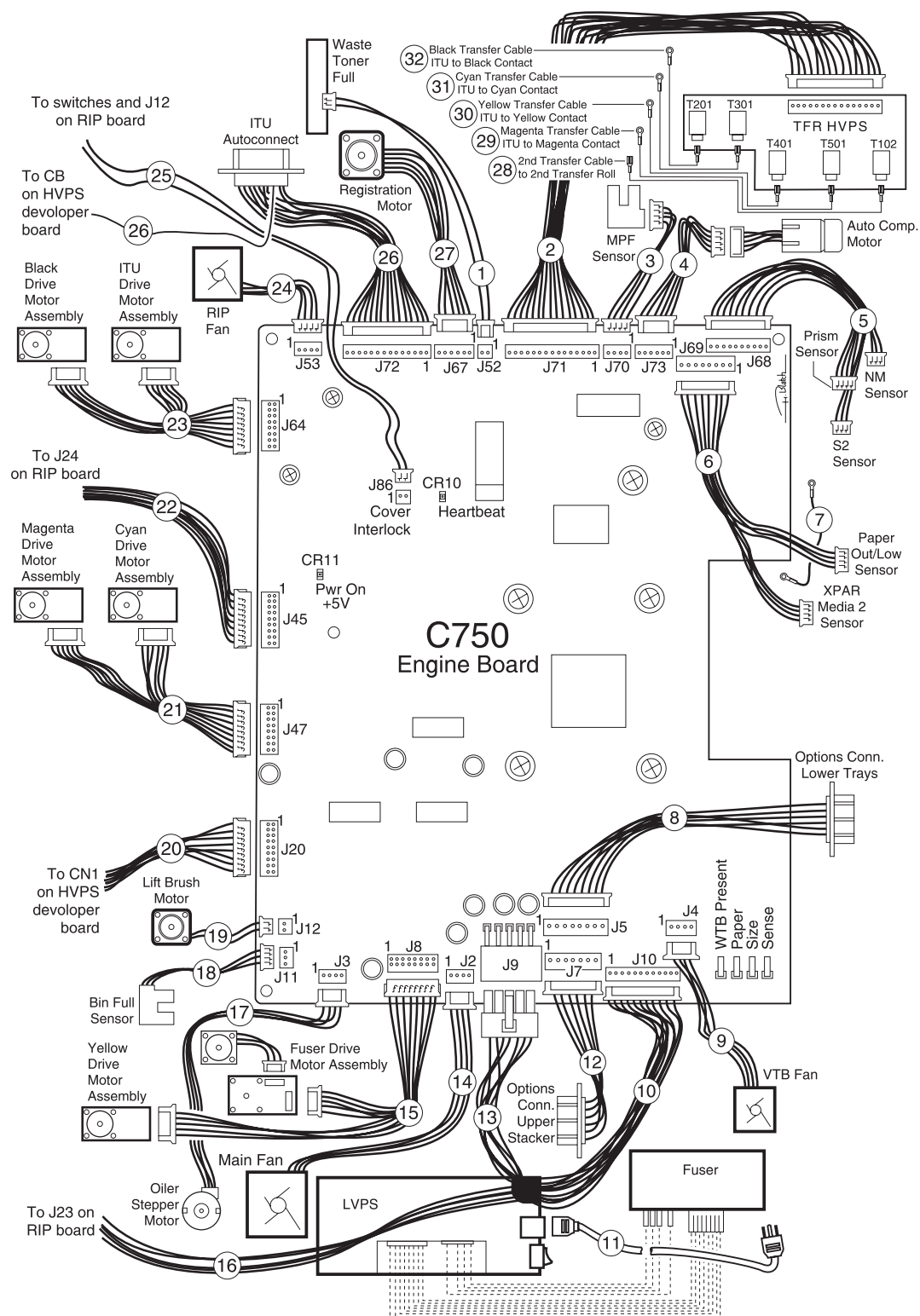
Assembly 21.4: Electronics



Assembly 21.4: Electronics

Asm- Index	Part Number	Units	Description
21.4-1	12G6343	1	RIP fan duct
2		2	Screws, PP 12G6530
3	12G6361	1	RIP fan
4	12G6479	1	VTB fan
5	12G6490	1	VTB fan gap cover
6	12G6382	1	Fuser fan
7	12G6529	2	Screws, fuser fan mounting

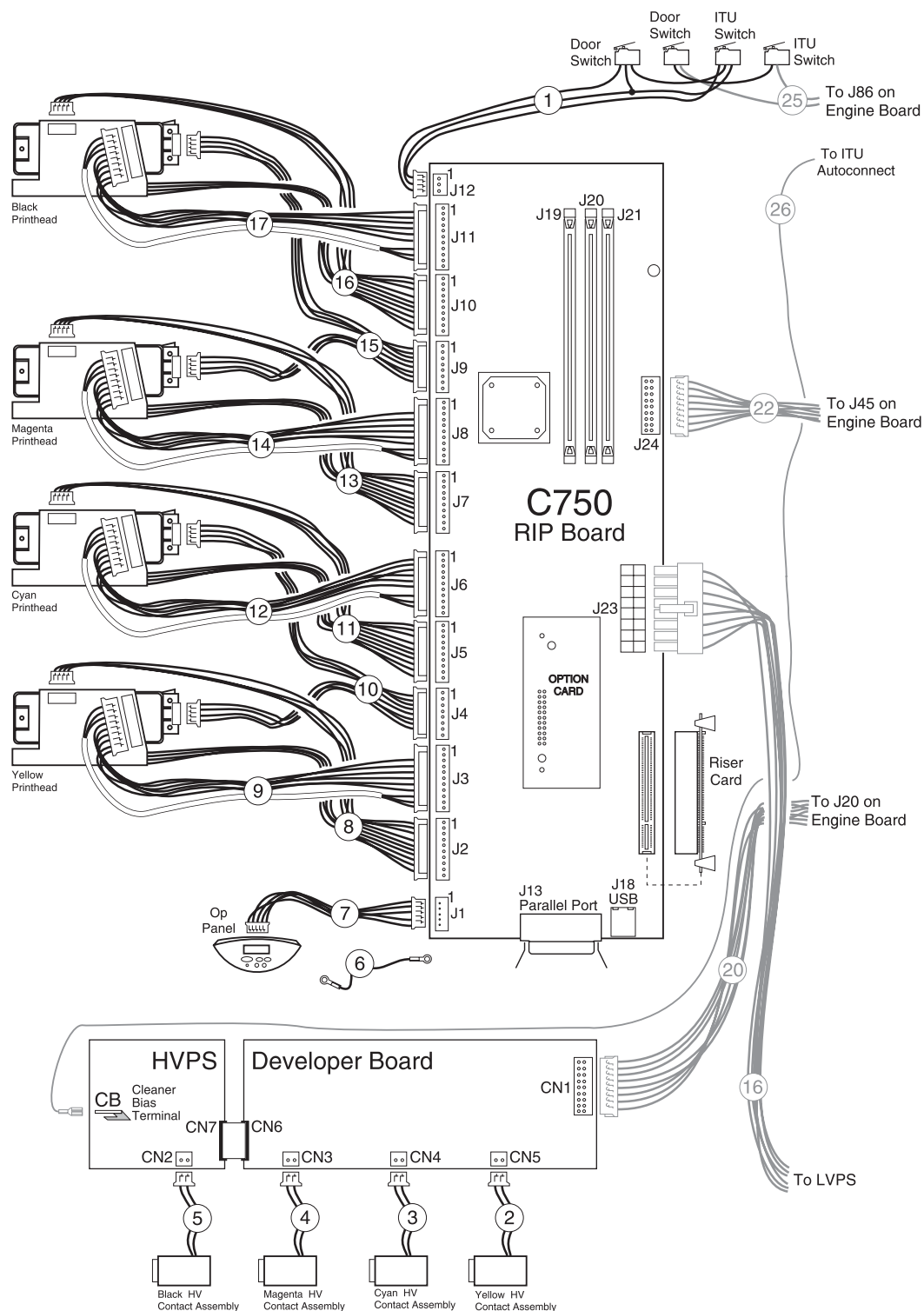
Assembly 22: Electronic cabling—engine board



Assembly 22: Electronic cabling—engine board

Asm— Index	Part Number	Units	Description
22—1		1	Cable, waste toner full, attached to ITU drive assembly (P/N 56P1216)
2	12G6317	1	Cable, HVPS control - transfer
3	12G6448	1	Cable, MPF paper level
4	56P0552	1	Cable, autocompensator motor
5	12G6486	1	Cable assembly (includes S2/NMS/transparency sensors)
6	56P0551	1	Cable, paper out/low and transparency media 2 sensors
7	12G6387	1	Cable, ground
8	12G6320	1	Cable, options - bottom
9		1	Cable, attached to VTB fan (P/N 12G6479)
10		1	Cable, LVPS to engine board/fuser, attached to LVPS (P/N 12G6329)
11		1	Power cord (see “Electronics” on page 7-34 for a listing of part numbers)
12	12G6319	1	Cable, options - stacker
13		1	Cable, LVPS to engine/power, attached to LVPS (P/N 12G6329)
14	12G6350	1	Cable, attached to main fan (P/N 12G6382)
15	12G6349	1	Cable, fuser and yellow cartridge motor
16		1	Cable, LVPS to RIP board power, attached to LVPS (P/N 12G6329)
17	56P2031	1	Cable, web oiler motor
18		1	Cable, bin full sensor, with sensor (P/N 12G6506)
19		1	Cable, attached to BOR lift motor (P/N 12G6446)
20	12G6316	1	Cable, HVPS control - developer
21	12G6350	1	Cable, cyan and magenta cartridge drive motors
22	12G6318	1	Cable, engine/RIP communications
23	12G6351	1	Cable, ITU and black cartridge drive motors
24		1	Cable, attached to RIP fan (P/N 12G6361)
25	12G6504	1	Cable, HVPS interlock/cover open
26	56P0311	1	Cable ITU autoconnect
27		1	Cable, attached to registration motor (P/N 12G6480)
28	56P0174	1	Cable, second transfer roll
29	12G6440	1	Cable, magenta transfer
30	12G6546	1	Cable, yellow transfer
31	12G6441	1	Cable, cyan transfer
32	12G6439	1	Cable, black transfer

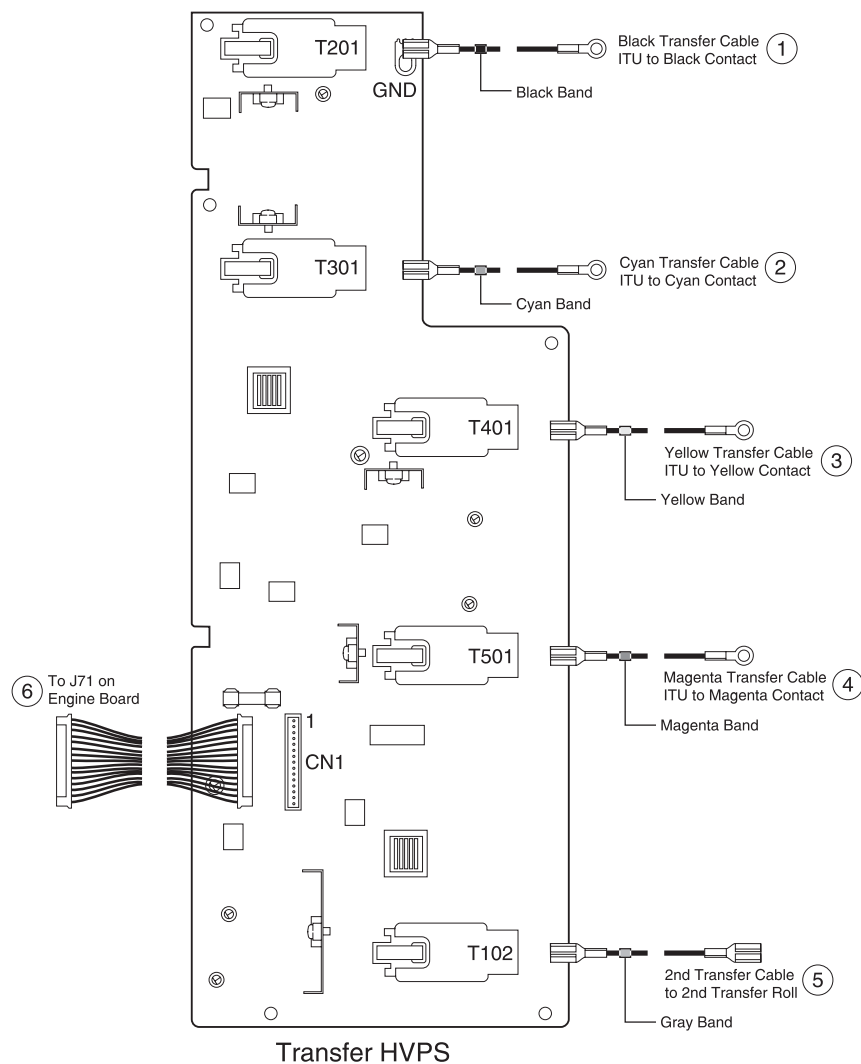
Assembly 23: Electronic cabling—RIP board



Assembly 23: Electronic cabling—RIP board

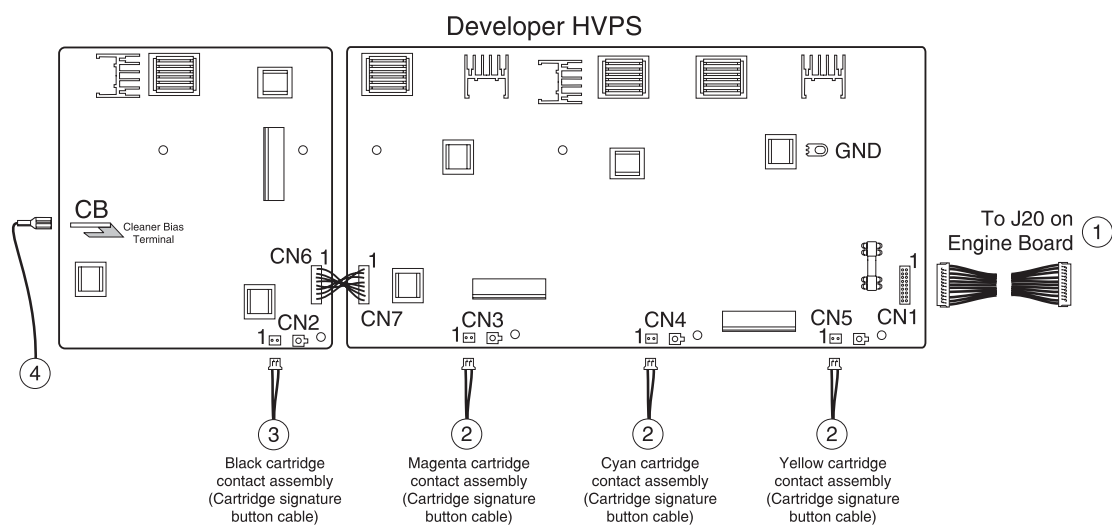
Asm— Index	Part Number	Units	Description
23—1	12G6503	1	Cable, printhead interlock/cover open
2	56P0310	1	Cable, signature button, attached to yellow HV contact assembly
3	56P0310	1	Cable, signature button, attached to cyan HV contact assembly
4	56P0310	1	Cable, signature button, attached to magenta HV contact assembly
5	56P0310	1	Cable, signature button, attached to black HV contact assembly
6	12G6387	1	Cable, ground
7	12G6321	1	Cable, operator panel
8		1	Printhead assembly - yellow, includes HSYNC and mirror motor cables (P/N 12G6322)
9	12G6310	1	Cable, video printhead - yellow
10	12G6314	1	Cable, thermistor - yellow and cyan
11		1	Printhead assembly - cyan, includes HSYNC and mirror motor cables (P/N 12G6312)
12	12G6311	1	Cable, video printhead - cyan
13		1	Printhead assembly - magenta, includes HSYNC and mirror motor cables (P/N 12G6322)
14	12G6312	1	Cable, video printhead - magenta
15	12G6315	1	Cable, thermistor - magenta and black
16		1	Printhead assembly - black, includes HSYNC and mirror motor cables (P/N 12G6322)
17	12G6313	1	Cable, video printhead - black

Assembly 24: Electronic cabling—transfer HVPS



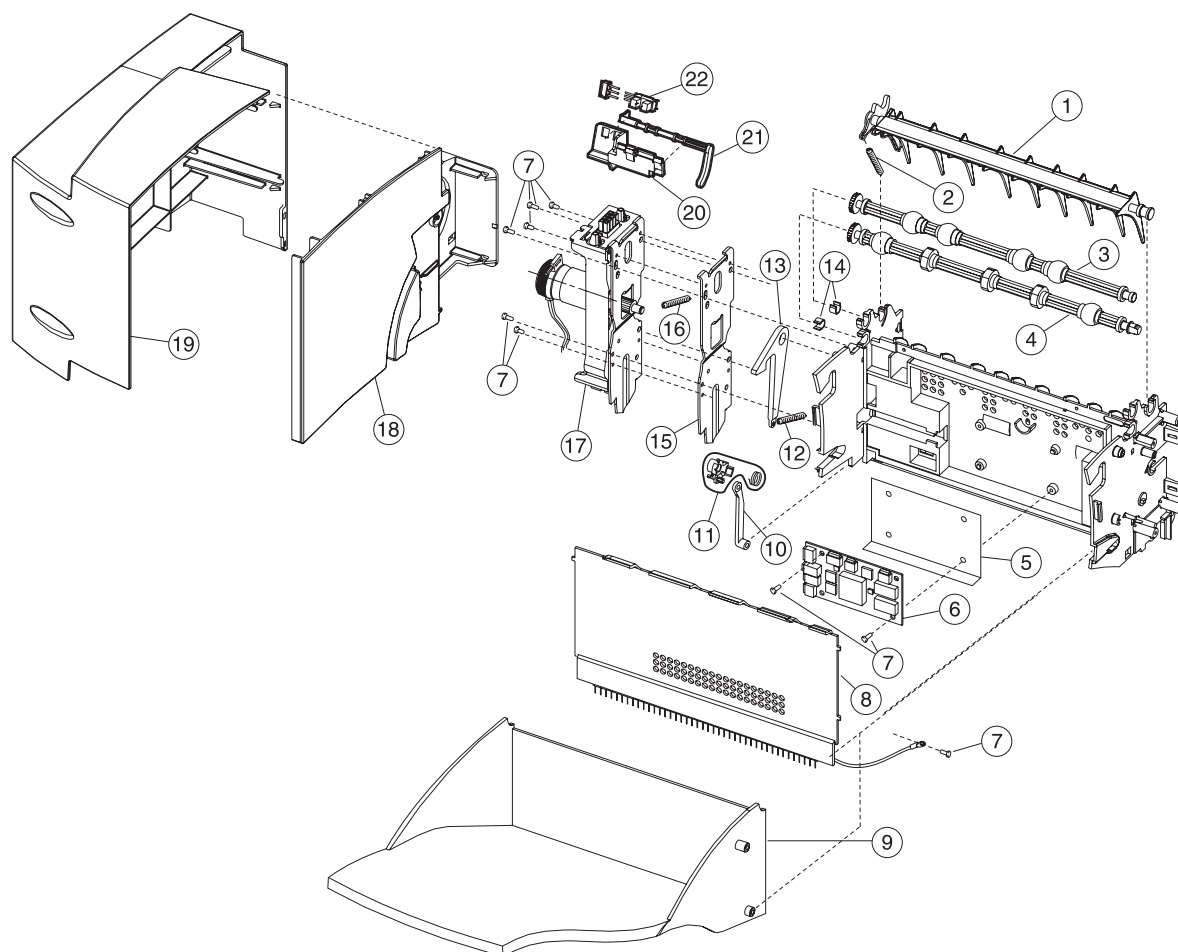
Asm-Index	Part Number	Units	Description
24-1	56P1565	1	Cable assembly, black terminal contact
2	56P1567	1	Cable assembly, cyan terminal contact
3	56P1568	1	Cable assembly, yellow terminal contact
4	56P1566	1	Cable assembly, magenta terminal contact
5	56P0174	1	Cable assembly, second transfer voltage
6	56P1502	1	Cable, HVPS control - transfer

Assembly 25: Electronic cabling—developer HVPS



Asm-Index	Part Number	Units	Description
25-1	56P1502	1	Cable assembly, HVPS control - developer
2	56P0310	3	Cartridge contact assembly, complete, cyan/magenta/yellow
3	56P1561	1	Cartridge contact assembly, complete, black
4	56P0311	1	Cable, ITU Autocomp out with CB lead

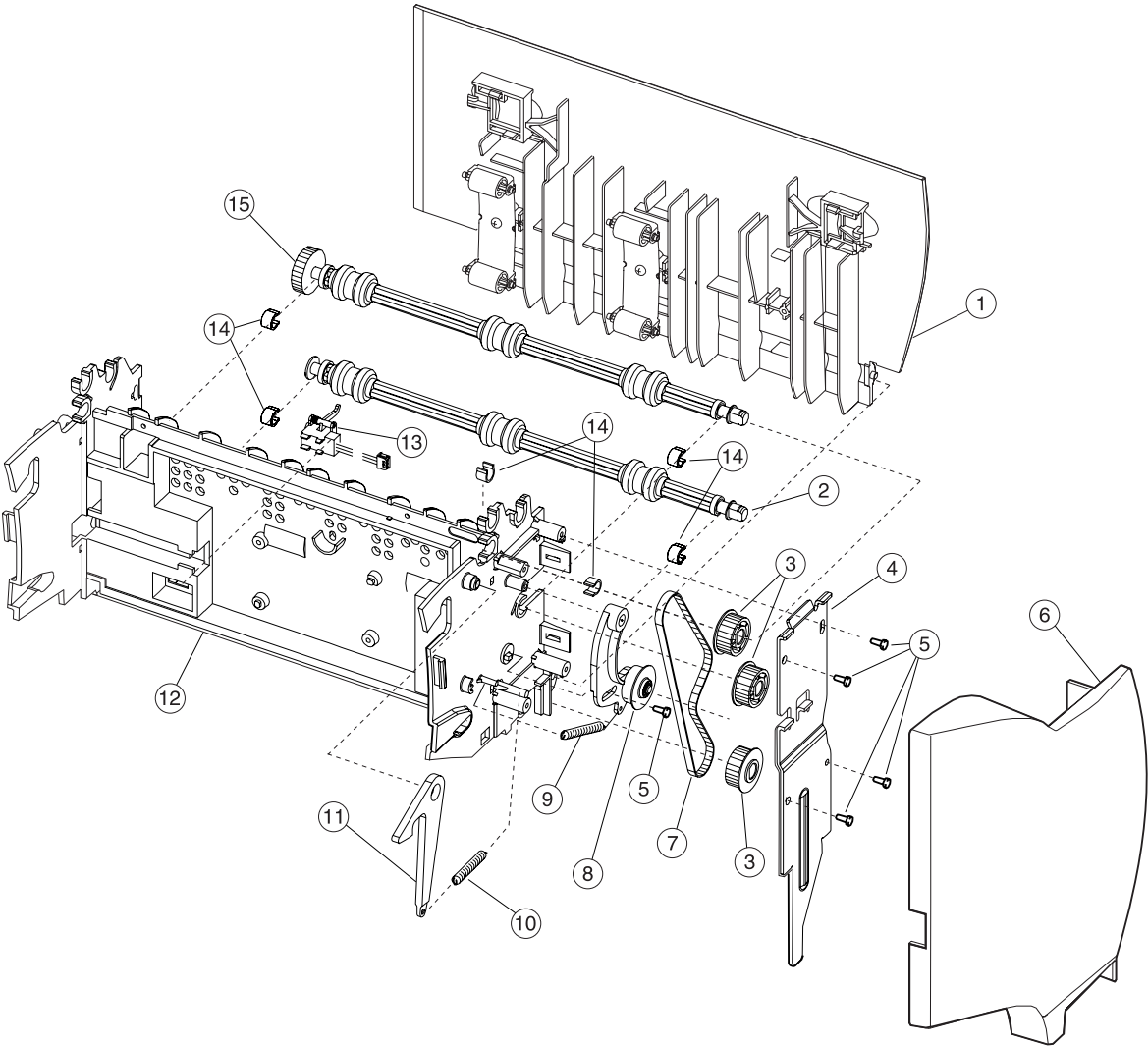
Assembly 26: Output expander



Assembly 26: Output expander

Asm— Index	Part number	Units	Description
26—1	99A0107	1	Deflector, upper redrive, also order 99A0104
2	99A0104	1	Spring, upper diverter
3	99A0369	1	shaft assembly, exit, also order PP 99A0572
4	99A0052	1	Shaft assembly, lower exit, also order PP 99A0572
5	56P0407	1	Shield, output option card
6	99A0915	1	Board, Output Expander DC motor
7		9	Screw, PP 56P0167
8	56P0409	1	Cover, front control board
9	99A1817	1	Tray, Output Expander
10	99A1688	1	Diverter arm
11	99A1689	1	Spring clutch assembly
12	99A0482	1	Spring, output tray
13	99A0481	1	Latch, output tray
14		2	Shaft bearing PP 99A0572
15	99A1784	2	Bracket, attach
16	99A0415	2	Spring, swing arm
17	56P0408	1	Output Expander assembly, mechanical linkage
18	56P0402	1	Cover, rear support
19	56P0401	1	Rear cover
20	99A0409	1	Level sensor bracket
21	99A1580	1	Flag, output paper level
22	99A0414	1	Sensor, dual bin full

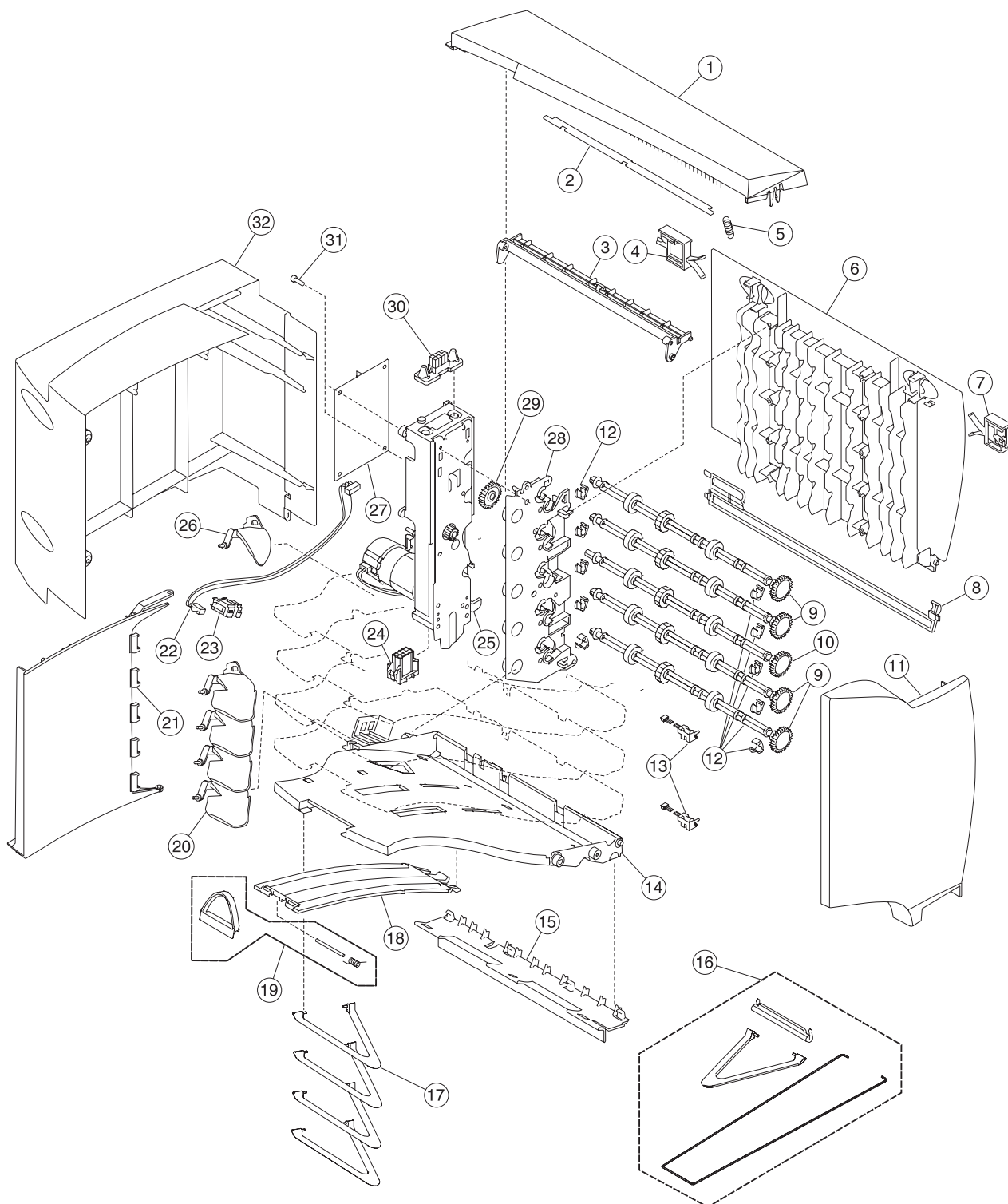
Assembly 26.1: Output expander



Assembly 26.1: Output expander

Asm— Index	Part number	Units	Description
26.1—1	56P0405	1	Door assembly, right jam access
2	99A0368	1	Shaft assembly, lower, also order PP 99A0572
3	99A0363	3	Pulley, drive
4	56P0410	2	Bracket, attach
5		11	Screw, PP 56P0167
6	56P0400	1	Cover, front
7	99A0361	1	Belt, 160 gear
8	99A0362	1	Arm assembly, belt idler
9	99A0364	1	Spring, belt tensioner
10	99A0482	1	Spring, output tray
11	99A0481	1	Latch, output tray
12	99A0912	1	Frame assembly
13	99A0351	1	Sensor, Output Expander pass thru
14		6	Shaft bearing PP 99A0572
15	99A0913	1	Shaft assembly, middle 40T, also order PP 99A0572
NS	99A1744	1	Kit, Multi-Bin Stacker

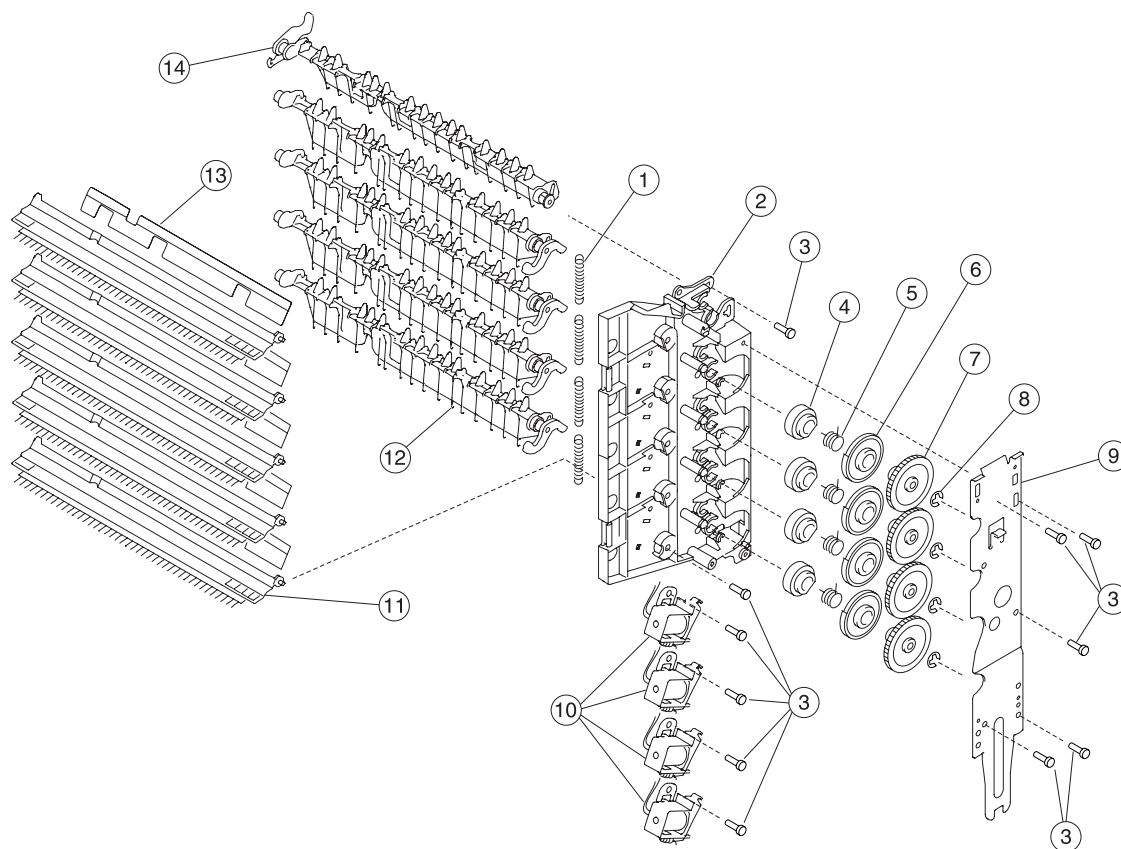
Assembly 27: 5-bin mailbox



Assembly 27: 5-bin mailbox

Asm— Index	Part number	Units	Description
27—1	99A1512	1	Cover, redrive cap
2	99A1710	1	Cover, wire
3	56P0416	1	Cover, top bin
4	56P0423	1	Latch, rear access door
5	99A0104	1	Spring, upper diverter
6	56P0411	1	Door, front
7	56P0422	1	Latch, access door front
8	56P0415	1	Cover, right
9	99A1723	4	Shaft asm, drive
10	99A1724	1	Shaft asm, drive with gear
11	99A1708	1	Cover, right side
12	99A1725	1	Packet, drive shaft bushing
13	99A1742	2	Sensor, 5-Bin Mailbox pass thru
14	99A1712	5	Tray, paper cap
15	56P0420	1	Bracket asm, bail attach
16	99A1743	1	Kit, 5-Bin Mailbox asm
17		1	Bail, order 99A1743, 5-Bin Mailbox asm kit
18	99A1713	5	Support, paper tray
19	99A1687	5	Stop asm, paper tray
20	99A1735	4	Flag, bin full
21	56P0412	1	Rear structural cover
22	99A1736	5	Cable, dual sensor
23	99A1737	5	Sensor, dual bin level
24	99A1718	1	Cable asm, lower autoconnect
25	99A1716	1	Drive asm, main DC drive
26	56P0417	1	Flag, bin full
27	99A1740	1	Board asm, 5-Bin Mailbox system
28	99A1726	1	Frame asm, left w/clutch asm
29	99A1786	1	Gear, drive
30	99A1719	1	Cable asm, upper autoconnect
31		12	Screw, board mounting, PP 99A0263
32	56P0413	1	Cover, left side

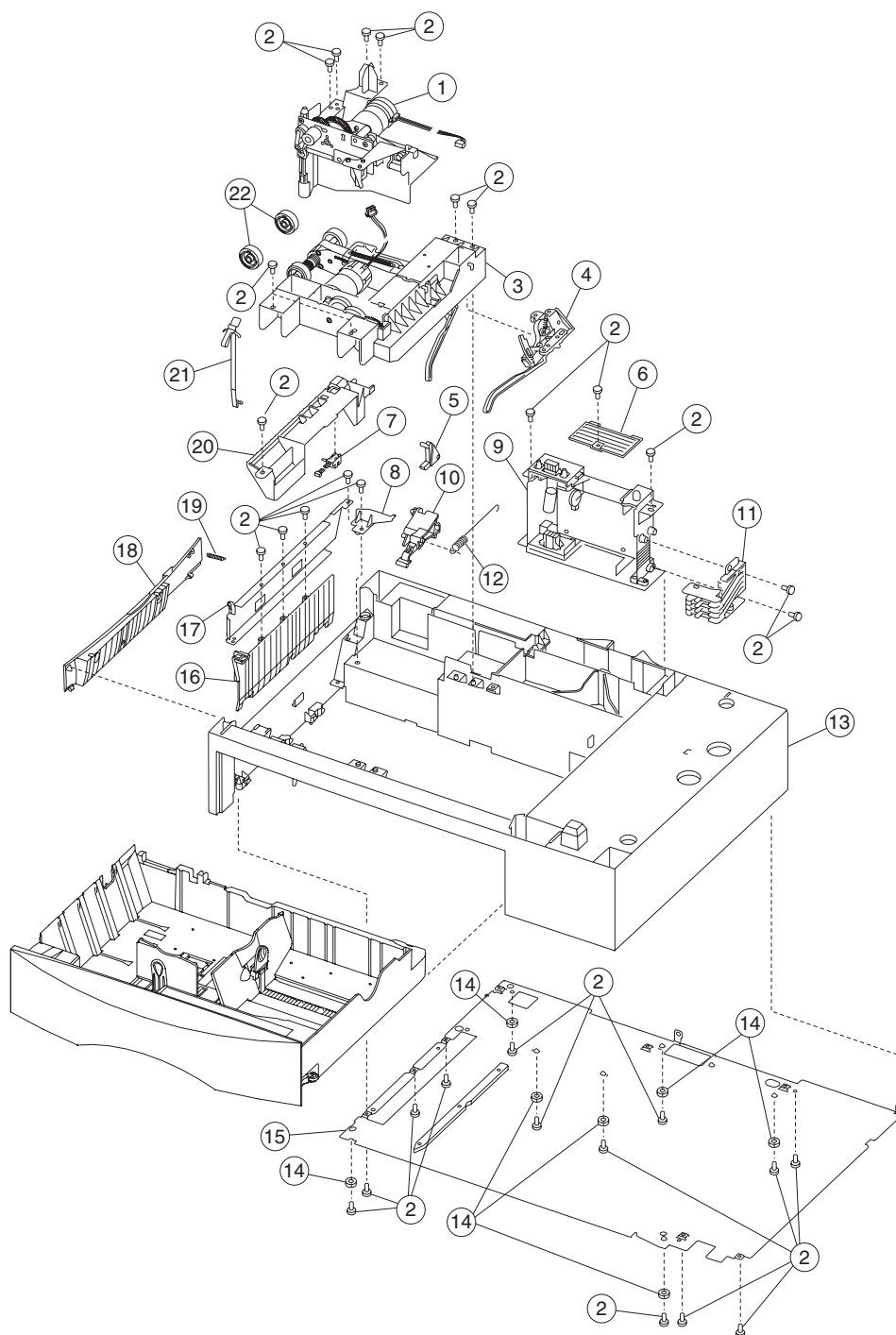
Assembly 27.1: 5-bin mailbox



Assembly 27.1: 5-Bin Mailbox

Asm— Index	Part number	Units	Description
27.1—1	99A1741	4	Spring, diverter
2	99A1727	1	Frame asm, right side
3		12	Screw, board mounting PP 12G6309
4	99A1728	4	Cam, diverter actuator
5	99A1731	4	Spring, diverter actuator
6	99A1729	4	Latch, diverter actuator
7	99A1730	4	Arbor, diverter actuator
8	99A1789	4	C-clip
9	56P0418	1	Bracket, attach front
10	99A1732	4	Solenoid, diverter
11	99A1738	5	Deflector, paper exit w/brush
12	99A1722	4	Deflector, paper
13	99A1787	4	Deflector
14	99A1721	1	Deflector, paper top bin
NS	99A1734	1	Spring, static ground
NS	99A0462	1	Grease packet, IBM #23
NS	99A1715	1	Roller asm, rear access door
NS	99A1717	1	Gear, drive
NS	99A1788	1	Retainer, R-ring
NS	99A0450	10	Retainer
NS	56P0550	1	Cable, tray media level sensor

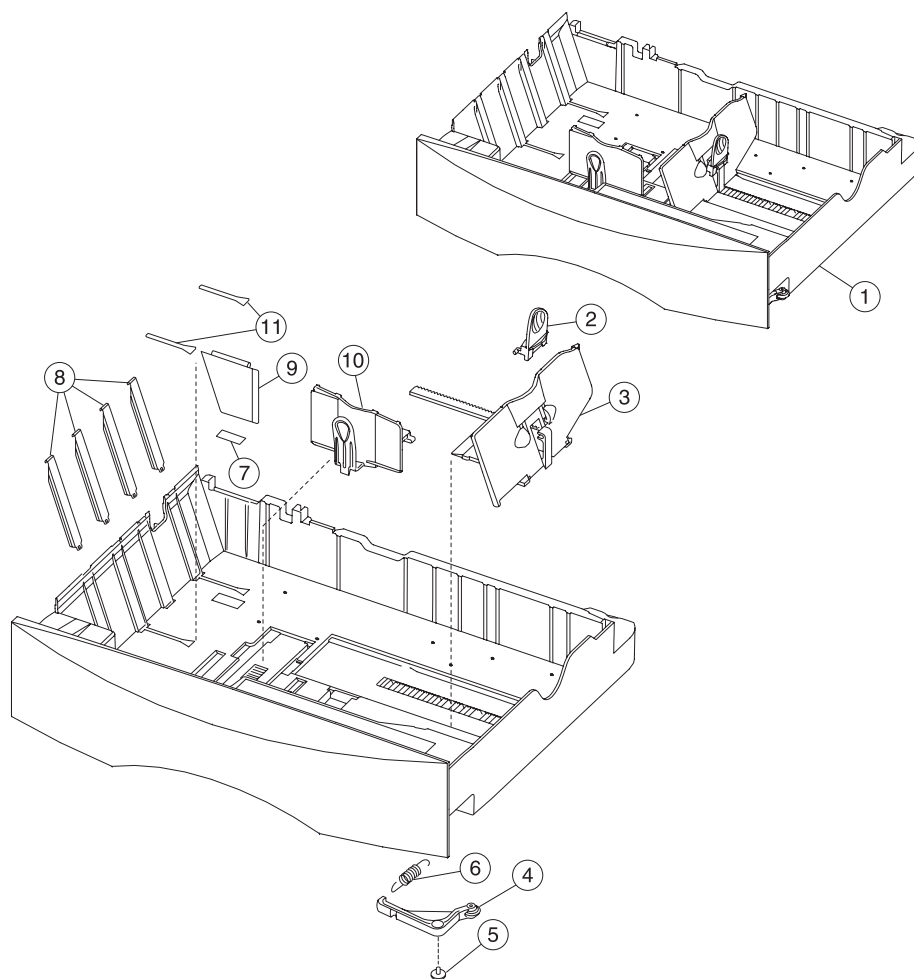
Assembly 28: 500-sheet drawer option



Assembly 28: 500-sheet tray option

Asm- Index	Part number	Units	Description
28-1	56P0168	1	Drive assembly, 500 option 2
2		31	Screw, PP 12G6309
3	12G6550	1	500-Sheet Option tray pick assembly
4	12G6565	1	Paper level sensing assembly
5	12G6471	1	Tray interlock bellcrank
6	12G6556	1	Cover, frame
7	12G6553	1	Pass thru sensor
8	12G6562	1	Hinge
9	12G6559	1	Electronics/size sensing assembly with system board
10	12G6558	1	Pick arm lift bellcrank
11	12G6566	1	Paper size sensing assembly
12	12G6557	1	Bellcrank lift spring
13	12G6560	1	500 base assembly
14	12G6380	7	Machine pad
15	56P0169	1	Plate, 500 support assembly
16	12G6554	1	Paper guide
17	12G6563	1	Wall support plate
18	12G6552	1	Base door assembly
19	12G6561	1	Spring
20	12G6555	1	500 option deflector
21	12G6567	1	Grounding spring
22	99A0070	2	Pick roll tires
NS	12G6510	4	Cable tie

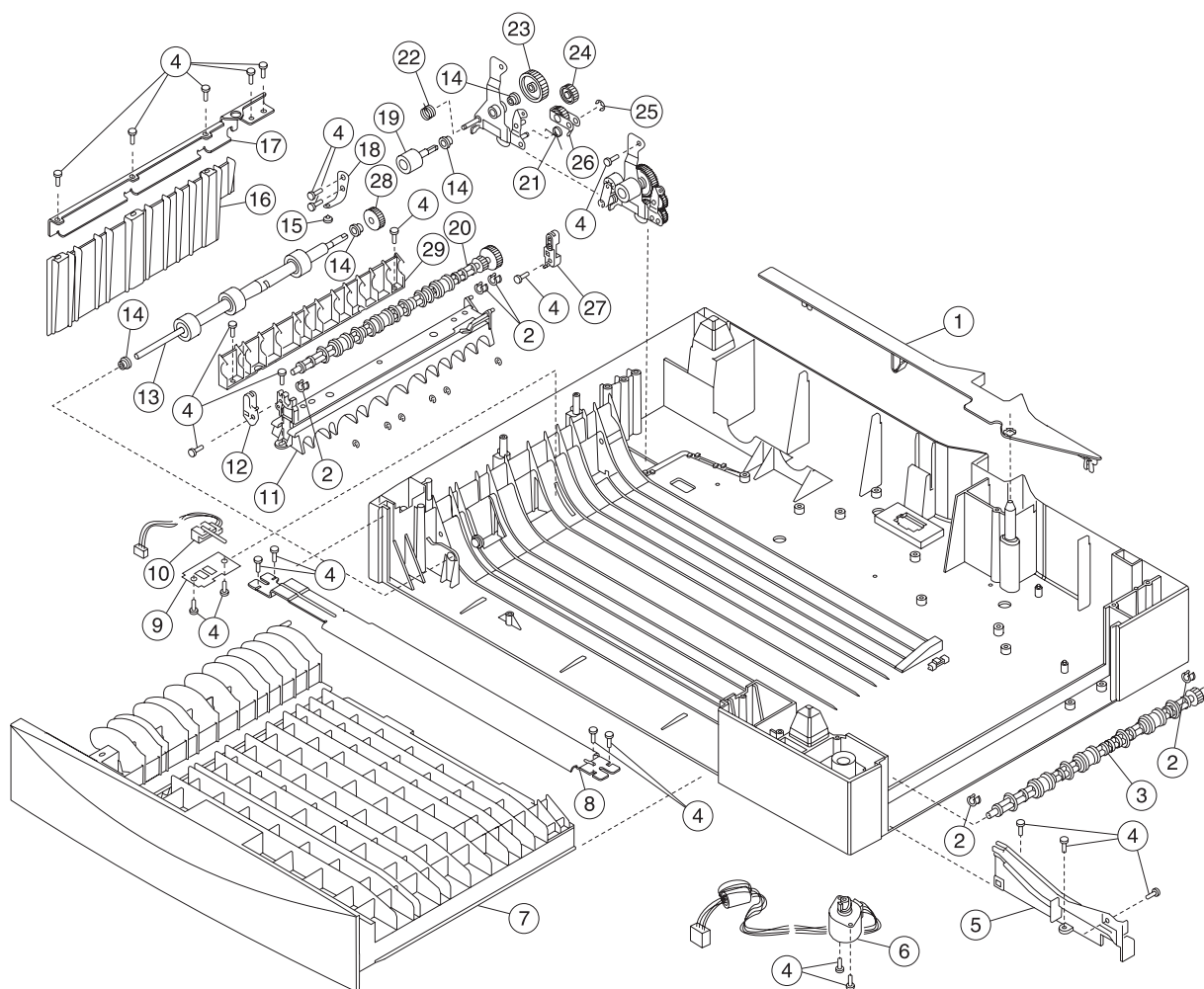
Assembly 28.1: 500-sheet tray option



Assembly 28.1: 500-sheet tray option

Asm— Index	Part number	Units	Description
28.1—1	12G6416	1	500-Sheet tray assembly
2	12G6419	1	Back restraint latch
3	12G6418	1	Back restraint
4	12G6425	1	Tray bias bellcrank assembly
5		1	Screw, PP 12G6533
6	12G6426	1	Tray bias spring
7	12G6568	1	Reflector label
8	12G6421	1	Wear strip
9	12G6420	1	Tray wear clip
10	12G6417	1	Side restraint
11	56P1504	2	Active restraint pad

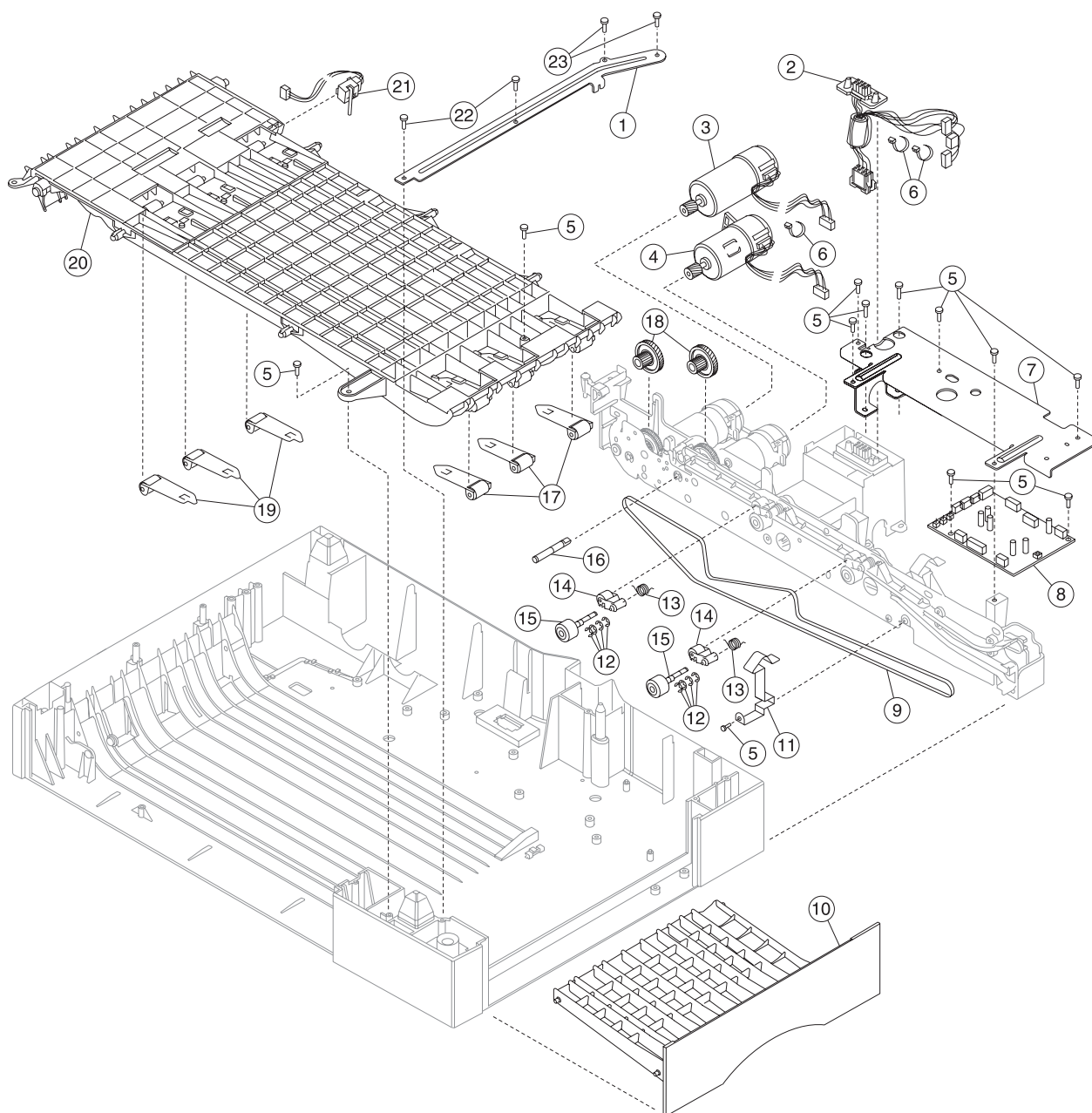
Assembly 29: Duplex option



Assembly 29: Duplex option

Asm- Index	Part number	Units	Description
28-1	56P0480	1	Back cover
2	99A2540	5	Redrive bearing
3	56P0447	1	Duplex entry shaft assembly
4		20	Screw PP 12G6533
5	56P0434	1	Right side front tray guide
6	56P0483	1	Deflector actuator assembly
7	56P0432	1	Duplex front jam tray assembly
8	56P0457	1	Duplex support bracket
9	56P0455	1	Sensor mount plate
10	56P0442	1	Duplex exit sensor
11	56P0435	1	Duplex shaft mount
12	56P0479	1	Front decurl assembly
13	56P0444	1	F/R backup shaft assembly
14	56P0476	3	5 mm bushing
15	56P0473	1	Brake pad
16	56P0439	1	Duplex paper guide
17	56P0454	1	Wall support
18	56P0475	1	Brake spring
19	56P0472	1	Pass thru shaft assembly
20	56P0441	1	Duplex shaft assembly
21	56P0468	1	Pass thru spring
22	56P0470	1	Aligner arm spring
23	56P0466	1	Spur drive gear
24	56P0467	2	26T duplex gear
25	99A0267		Retainer PP 99A0267
26	56P0471	1	Bellcrank assembly
27	56P0474	1	Decurl BAC assembly
28	56P0445	1	40T shaft drive F/R gear
29	56P0449	1	Support decurl guide
NS	56P0482	1	Pulley washer

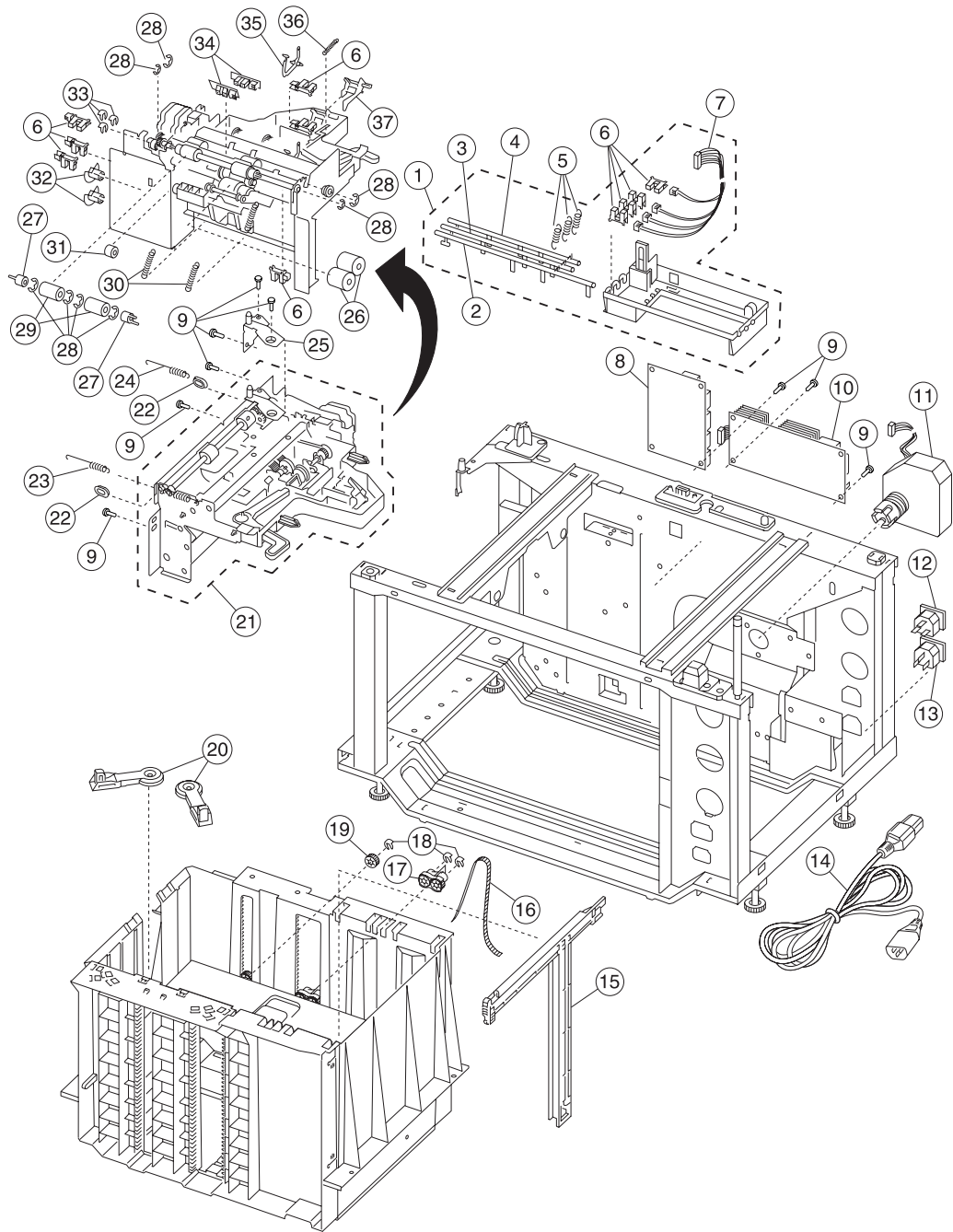
Assembly 29.1: Duplex option



Assembly 29.1: Duplex option

Asm— Index	Part number	Units	Description
28.1—1	56P0456	1	Duplex support plate
2	56P0462	1	Autoconnect cable assembly
3	56P0463	1	DC forward/reverse motor assembly
4	56P0464	1	DC duplex feed motor
5		1	Screw PP 12G6309
6	12G6510	6	Cable Tie (6 in pack)
7	56P0459	1	Back support
8	56P0430	1	Duplex card assembly
9	56P2484	1	Belt, transfer
10	56P0433	1	Right jam clearance tray assembly
11	56P0458	1	Chassis ground spring
12	99A1789	1	Retainer, C-clip
13	56P0478	2	Aligner spring
14	99A0323	2	Paper guide assembly
15	56P0465	2	Drive alignment shaft assembly
16	56P0477	1	Reduction gear shaft
17	56P0451	3	Backup spring assembly
18	99A1717	2	32 ppm drive gear
19	56P0452	3	Backup spring assembly
20	56P0436	1	Upper rib assembly
21	56P0437	1	Duplex output sensor
22			Screw PP 12G6530
23			Screw (long)
NS	99A0323	2	Paper guide assembly

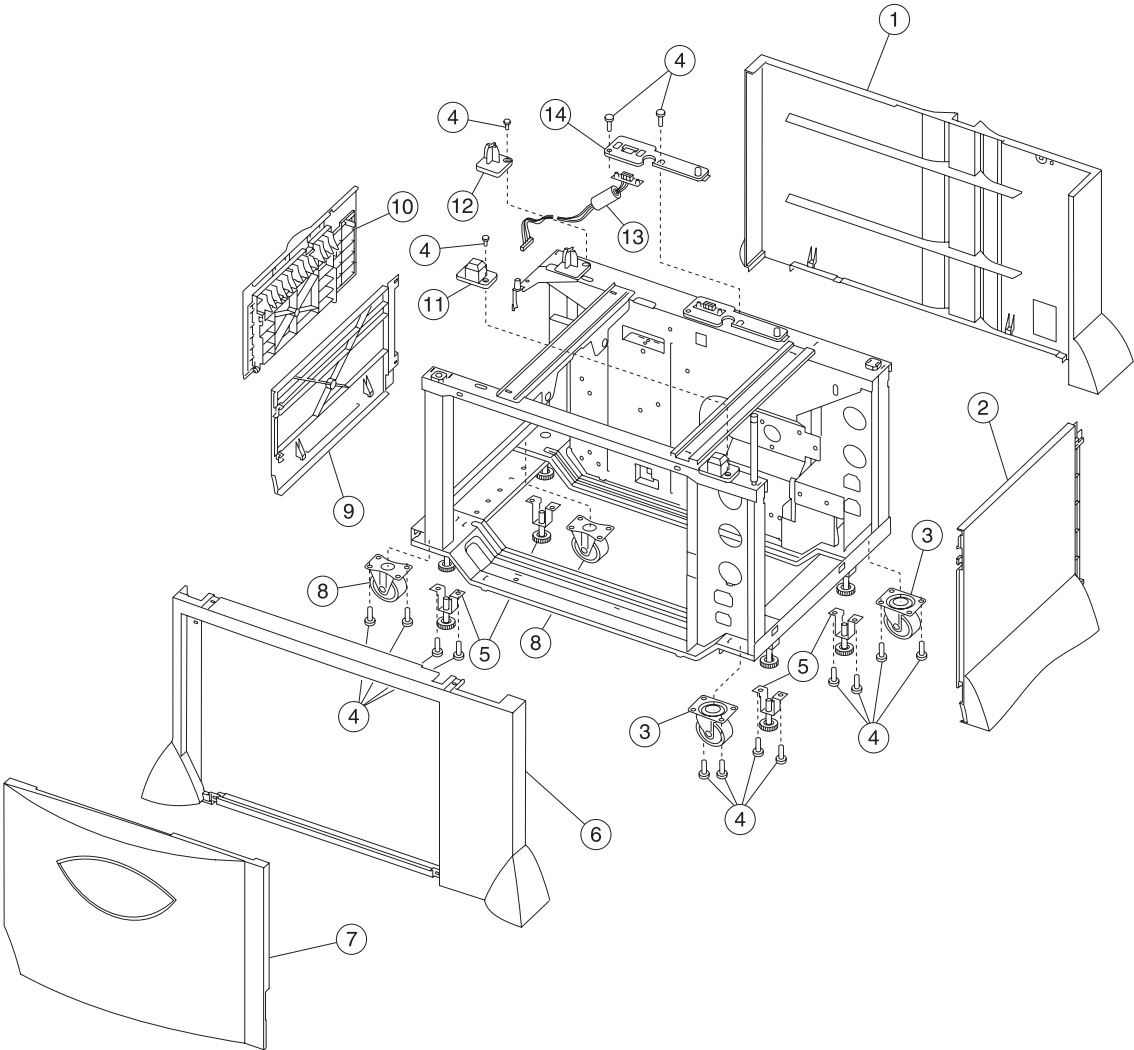
Assembly 30: High-capacity input tray (HCIT)



Assembly 30: High-capacity input tray (HCIT)

Asm- Index	Part number	Units	Description
29-1	56P0561	1	Paper size sensor box assembly
2	56P0519	1	Flag, paper size R
3	56P0520	1	Flag, paper size F
4	56P0518	1	Flag, paper size C
5	56P0522	3	Spring, paper size flag
6	56P0516	10	Sensor, photo interrupter
7	56P0511	1	Paper size sensors cable
8	56P0494	1	System control board
9			Screws PP 56P0565
10	56P0495	1	LVPS
11	56P0513	1	Elevator motor assembly
12	56P0497	1	AC power outlet
13	56P0498	1	AC power inlet
14	56P0490	1	Jumper, AC power cord
15	56P0524	1	Paper tray guide
16	56P0547	1	Elevator lift belt
17	56P0549	1	Elevator lift
18	56P0563	3	Ring 7, elevator lift gear/elevator lift
19	56P0548	1	Elevator lift gear
20	56P0523	2	Paper tray arms
21	56P0525	1	Feed unit, complete assembly
22	56P0527	2	Bushing
23	56P0533	1	Spring, feed unit front
24	56P0534	1	Spring, feed unit rear
25	56P0562	1	Feed cover
26	56P0542	2	Separation/torque roller
27	56P0529	2	Feed cam
28			E-clips PP 56P0531
29	56P0528	2	Feed roller
30	56P0530	2	Spring, feed unit
31	56P0532	1	Bushing, 060
32	56P0544	2	Emitter timing wheel
33	56P0535	3	Clip, plastic 5W
34	56P0526	2	Sensors, special optical
35	56P0536	1	Level sensor flag
36	56P0540	1	Spring, extension
37	56P0539	1	Near empty sensor flag

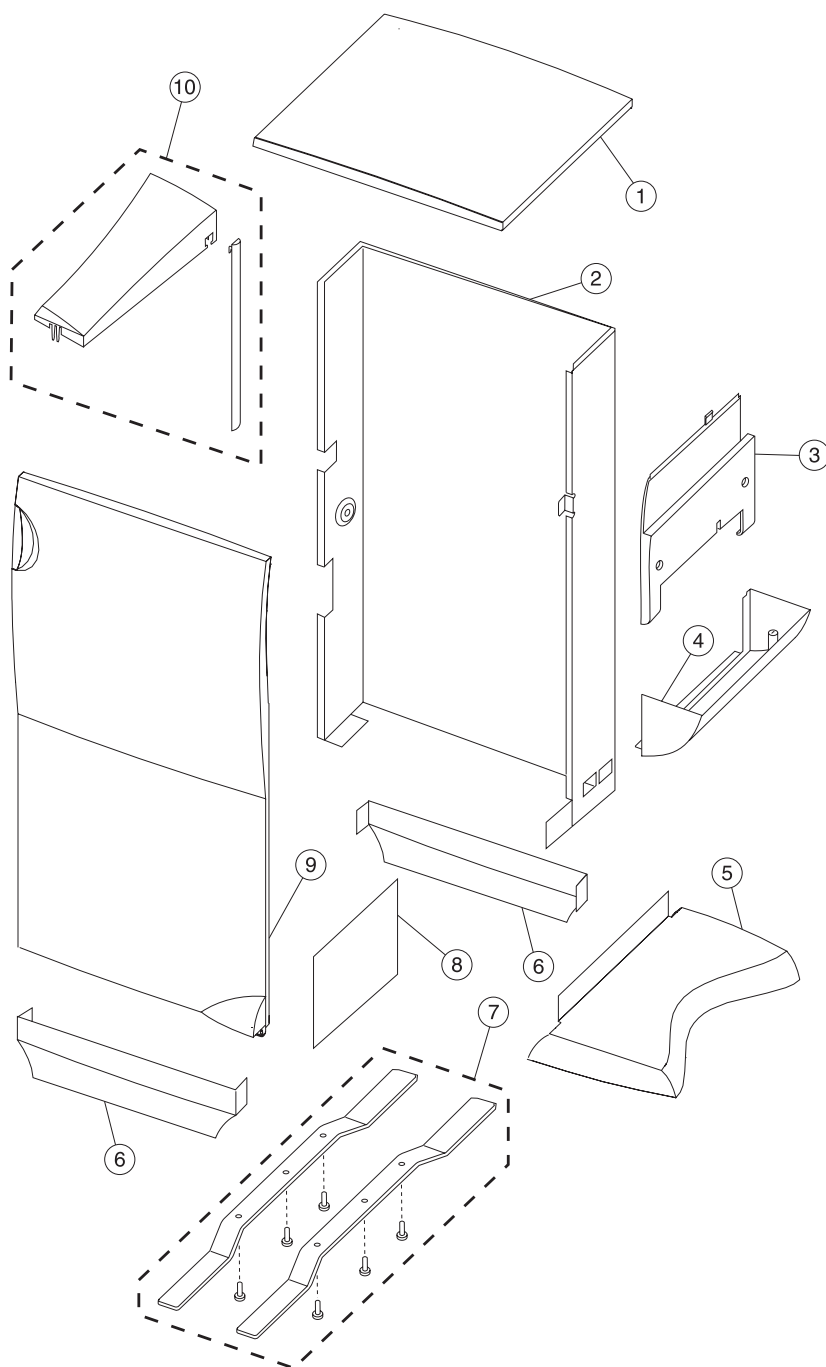
Assembly 30.1: High-capacity input tray (HCIT)



Assembly 30.1: High-capacity input tray (HCIT)

Asm- Index	Part number	Units	Description
29.1—1	56P0505	1	Rear cover
2	56P0503	1	Right side cover
3	56P0491	2	Caster, movable
4		16	Screws PP 56P0565
5	56P0493	4	F adjuster
6	56P0500	1	Front cover
7	56P0501	1	Cover, main CA
8	56P0492	2	Caster, fixed
9	56P0504	1	Left side cover
10	56P0508	1	Upper left side jam cover
11	56P0507	1	Locating pin, options front right
12	56P0506	1	Locating pin, options rear left
13	56P0514	1	Options autoconnect cable assembly
14	56P0517	1	Options cable mounting plate
NS	56P0509	1	Cable, feed unit special sensors
NS	56P0510	1	Cable, feed unit sensors
NS	56P0512	1	Cable, elevator motor
NS	56P0515	1	Magnetic latch
NS	56P0541	1	Tray present lever
NS	56P0543	9	Cable clamp
NS	56P0564	1	Kit, stabilizer with mounting screws

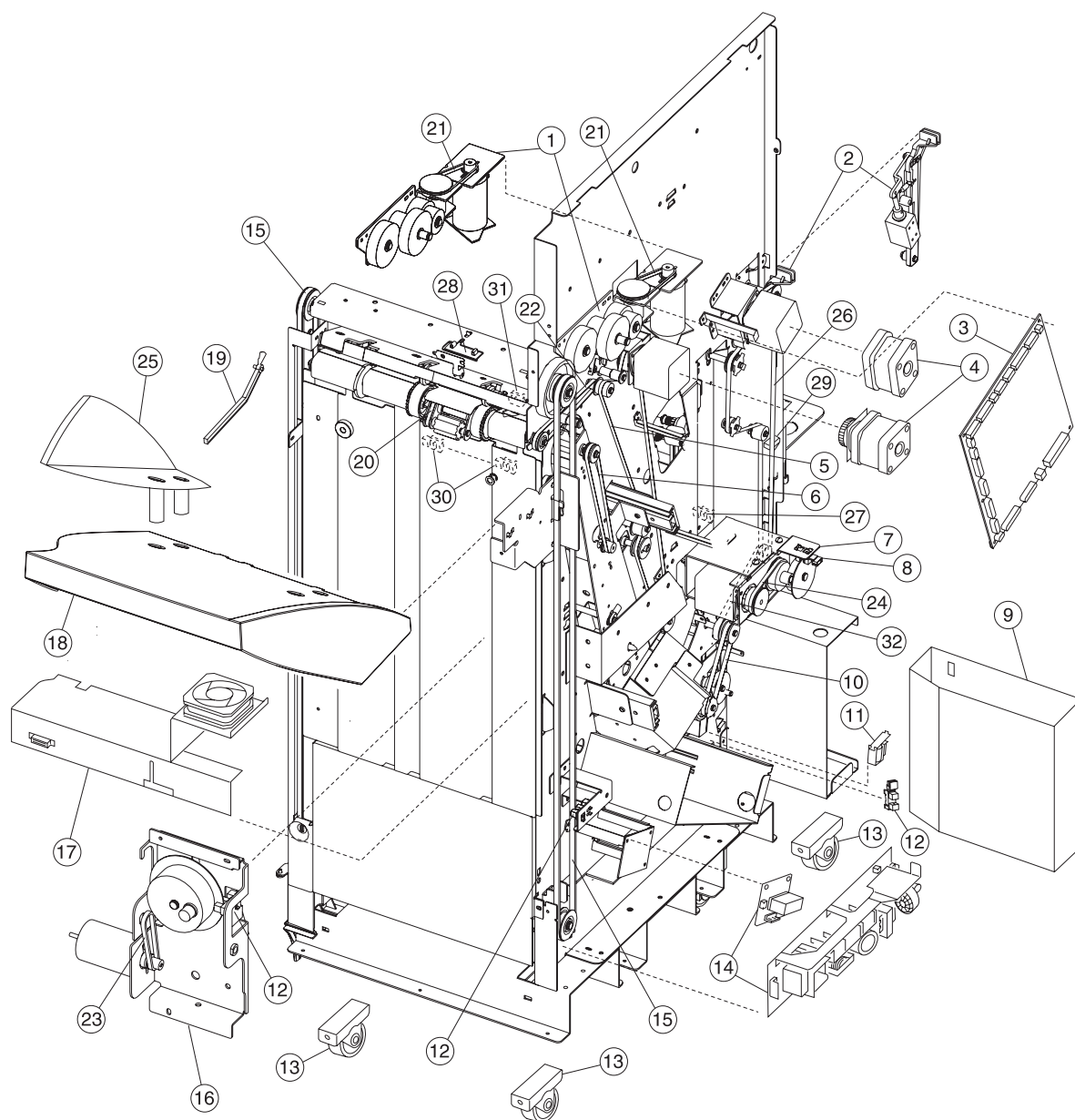
Assembly 31: High-capacity output finisher (HCOF)



Assembly 31: High-capacity output finisher (HCOF)

Asm- Index	Part number	Units	Description
30-1	56P0321	1	Top cover (tall finisher)
1	56P1287	1	Scanner plate (short finisher)
2	56P0569	1	Rear cover
3	56P0573	1	Upper right side cover (tall finisher)
3	56P1286	1	Upper right side cover (short finisher)
4	56P0574	1	Lower tray cover
5	56P0576	1	Bottom kick cover
6	56P0575	1	Front/rear lower cover
7	56P0387	1	Bar tip unit
8	56P0577	1	Lower right side cover
9	56P0320	1	Cover front door
10	56P0566	1	Finisher install kit
11	56P1290	1	Cover wire
NS	56P0317	1	Cartridge staple

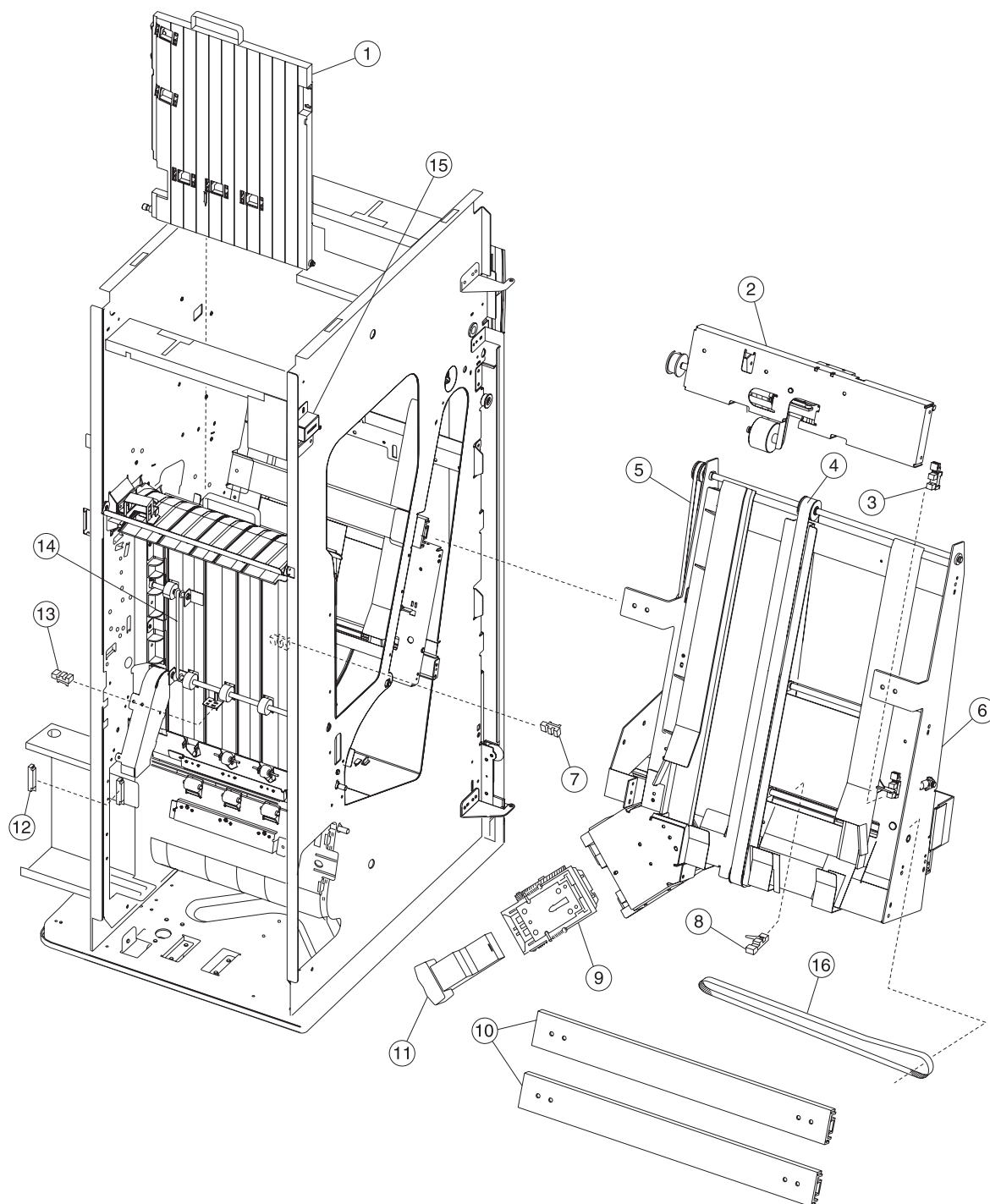
Assembly 31.1: High-capacity output finisher



Assembly 31.1: High-capacity output finisher

Asm— Index	Part number	Units	Description
30.1—1	56P0324	1	Motor assembly elevator tray
2	56P0357	1	Actuation assembly
3	56P0339	1	HCOF control board assembly
4	56P0325	1	Motor assembly paper feed
5	56P0332	1	Accumulator paper feed belt (40S3M900)
6	56P2294	1	Accumulator drive belt (B30S2M334)
7	56P0315	1	Punch assembly
8	56P0345	1	Punch motor homing sensor (GP1A73A)
9	56P0318	1	Box chad
10	56P0329	1	Inverter D drive belt (40S3M225)
11	56P0383	1	Solenoid inverter
12	56P0347	3	Inverter jam/tray near full/output tray offset sensor (EE-SX1235A-P2)
13	56P0342	4	Caster
14	56P0338	1	Low voltage power supply
15	56P0333	2	Tray elevator belt (60S6M1420)
16	56P0323	1	Output tray offset motor and gear assembly
17	56P0386	1	Fan assembly DC motor
18	56P0322	1	Tray paper
19	56P0326	1	Flag paper full
20	56P0331	1	Exit foam Roller drive belt (40S3M80)
21	56P0334	1	Tray elevator drive belt (170P2M4)
22	56P0335	1	Exit roller drive belt (40S2M264)
23	56P0336	1	Output tray offset drive belt (40S2M134)
24	56P0337	1	Punch belt (40S2M176)
25	56P0578	1	Tray wall cover
26	56P0327	1	Paper feed belt (40S3M888)
27	56P0343	1	Punch timing sensor (OJ-541-A5)
28	56P0350	2	Paper surface sensor (EE-SX460-P1-CHN)
29	56P0352	1	Printer docking switch SS-5FL-3T(10E)
30	56P0388	1	Tray limit switches (includes two)
31	56P0346	1	Exit timing sensor (EE-SPY415)
32	56P0328	1	Inverter transfer belt (40S3M198)
NS	56P0340	1	Cable, communications
NS	56P0341	1	Power cord
NS	56P0354	1	Bracket finisher alignment
NS	56P0356	1	Pack magnet, strong and weak and door latch

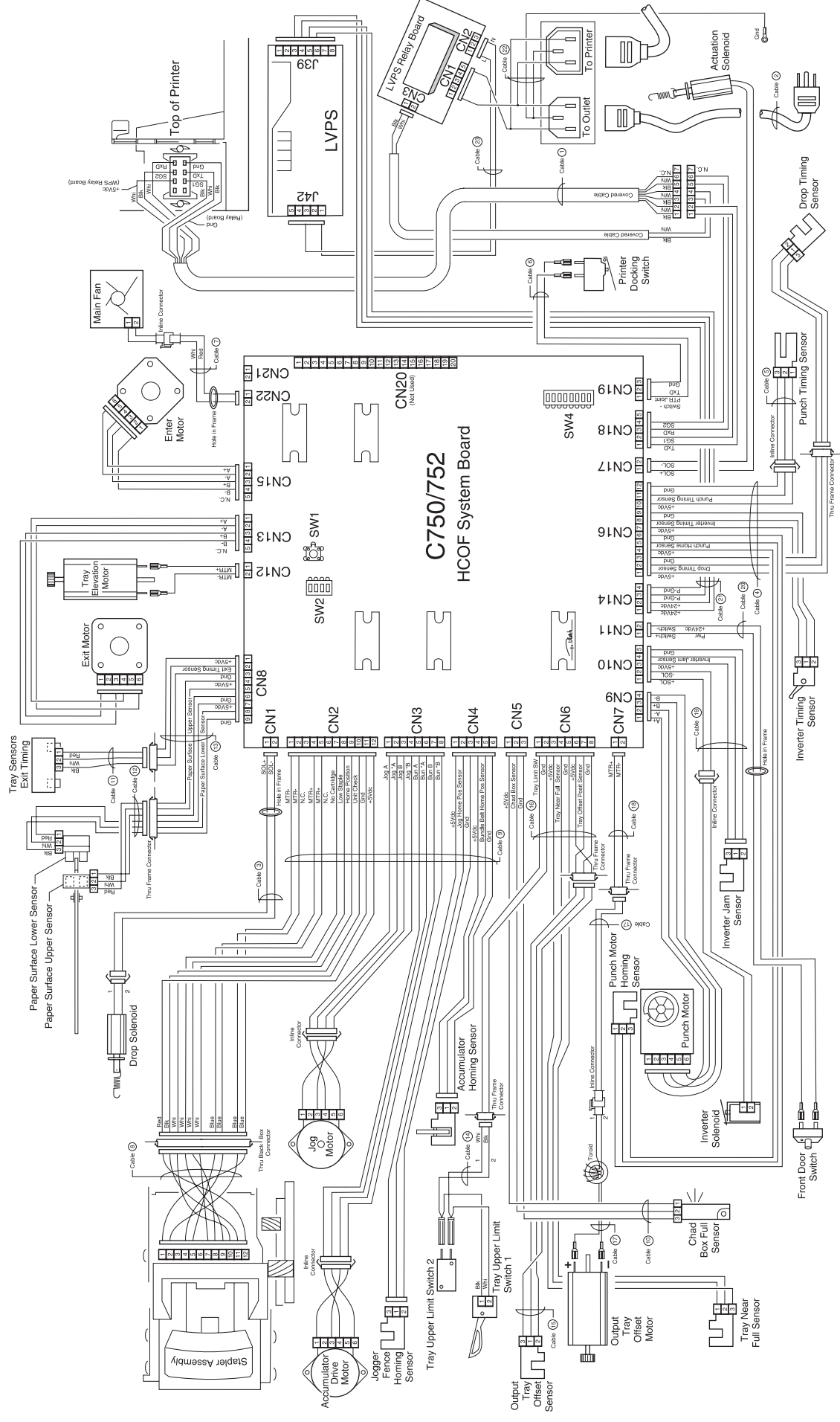
Assembly 31.2: High-capacity output finisher



Assembly 31.2: High-capacity output finisher

Asm- Index	Part number	Units	Description
30.2-1	56P0355	1	Guide vertical paper
2	56P0385	1	Solenoid drop assembly
3	56P0347	1	Jogger fence homing sensor (EE-SX1235A-P2)
4	56P0384	1	Accumulator belt (hook)
5	56P2294	1	Accumulator drive belt (B30S2M334)
6	56P0319	1	Accumulator w/o stapler
7	56P0348	1	Drop timing sensor (OS-535223-602)
8	56P0349	1	Accumulator homing sensor (OS-311D-A5)
9	56P0316	1	Staple assembly
10	56P0358	2	Accumulator slides
11	56P0317	1	Staple cartridge
12	56P0346	1	Chad box full sensor (EE-SPY415)
13	56P0344	1	Inverter timing sensor (OJ511K-A5)
14	56P0330	1	Paper feed-input belt (40S3M279)
15	56P0351	1	Cover open switch
16	56P2295	1	Jogger fence belt (B40S2M460)
NS	56P0382	1	Harness cable assembly D5 - low voltage power supply to low voltage power relay board

Assembly 32: High-capacity output finisher cables



Assembly 32: High-capacity output finisher cables

Asm— Index	Part number	Units	Description
31—1	56P0340	1	Cable, communications
2	56P0341	1	Power cord
3	56P0359	1	Harness cable assembly H2 - system board to drop solenoid
4	56P0360	1	Harness cable assembly H3 - system board to harness cable assembly H4/drop timing sensor/punch motor homing sensor/inverter timing sensor
5	56P0361	1	Harness cable assembly H4 - harness cable H3 to punch timing sensor
6	56P0362	1	Harness cable assembly H5 - system board to printer docking switch
7	56P0363	1	Harness cable assembly H6 - system board to fan
8	56P0364	1	Harness cable assembly S1 - stapler cable to stapler assembly
9	56P1280	1	Harness cable assembly stapler - system board to cable S1/jogger fence homing sensor/accumulator homing sensor/jogger motor accumulator drive motor
10	56P0368	1	Harness cable assembly S5 - system board to chad box full sensor
11	56P0369	1	Harness cable assembly E2 - cable E5 to exit timing sensor
12	56P0370	1	Harness cable assembly E3 - cable E5 to paper surface upper sensor/paper surface lower sensor
13	56P0371	1	Harness cable assembly E5 - system board to cable E2/E3
14	56P0372	1	Harness cable assembly E6 - cable E8 to tray limit switches
15	56P0373	1	Harness cable assembly E7 - cable E8 to output tray offset sensor
16	56P0374	1	Harness cable assembly E8 - system board to E6/E7
17	56P0375	1	Harness cable assembly E9 - cable E10 to output offset motor
18	56P0376	1	Harness cable assembly E10 - system board to cable E9
19	56P0378	1	Harness cable assembly R1 - system board to inverter solenoid/inverter jam sensor
20	56P0379	1	Harness cable assembly D1 - system board to front door switch
21	56P0380	1	Harness cable assembly D2 - system board to low voltage power supply
22	56P0381	1	Harness cable assembly D3 - low voltage power supply relay board to AC input/output
23	56P0382	1	Harness cable assembly D5 - low voltage power supply to low voltage power supply relay board.

Assembly 33: Options

Asm— Index	Part number	Units	Description
NS	56P9909	1	Card assembly, PRESCRIBE
NS	12G6509	1	Card assembly, 64MB SDRAM
NS	56P9910	1	Card assembly, 128MB SDRAM
NS	56P9911	1	Card assembly, 256MB SDRAM
NS	56P9912	1	Card assembly, 4MB flash DIMM
NS	56P9913	1	Card assembly, 8MB flash DIMM
NS	56P9914	1	Card assembly, 16MB flash DIMM
NS	56P9917	1	Card assembly, 32MB flash DIMM
NS	56P2107	1	Card assembly IPDS/SCS/Tne
NS	56P1120	1	Card assembly, Bar code
NS	56P1461	1	Card assembly, ImageQuick™
NS	56P9935	1	Card assembly, Traditional Chinese font DIMM
NS	56P9936	1	Card assembly, Simplified Chinese Font DIMM
NS	56P9975	1	Card assembly, Japanese font DIMM
NS	56P0162	1	Adapter, parallel 1284 C-B
NS	56P9982	1	Hard disk, 20GB with/adaptor (formatted)
NS	56P9926	1	Lexmark Optra Forms™ software
NS	56P9927	1	Lexmark Forms Director software
NS	56P9928	1	Lexmark Forms 4MB flash DIMM
NS	56P9929	1	Lexmark Forms 8MB flash DIMM
NS	56P9930	1	Lexmark Forms 16MBMB flash DIMM
NS	56P9932	1	Hard disk, Lexmark Forms
NS	56P9942	1	Hard drive mounting kit
NS	56P9934	1	MarkNet™ Token-Ring Print Server
NS	12G1695	1	MarkNet N2001e Ethernet 10/100BaseTX
NS	12G1696	1	MarkNet N2002e Ethernet 10BaseT/2
NS	56P1431	1	MarkNet X2011e Ethernet 10/100 BaseTX-1 port
NS	56P1432	1	MarkNet X2012e Ethernet 10/100 BaseTX/10 Base2 - 1 port
NS	56P1433	1	MarkNet X2031e Ethernet 10/100 Base TX - 3 port
NS	56P1434	1	MarkNet X2030e Token-Ring - 3 port
NS	99A0545	1	External serial adapter
NS	99A0560	1	Tri-Port Adapter - LocalTalk/serial/infrared
NS	99A0629	1	Coax/Twinax Adapter for SCS
NS	99A0424	1	Infrared adapter
NS	56P0161	1	RS-232-C serial/parallel 1284-C adapter
NS	99A0923	1	Parallel port + USB INA card assembly

Assembly 34: Miscellaneous

Asm- Index	Part number	Units	Description
NS		1	Screw type 323, PP 12G6309
NS		1	Screw type 324, PP 12G6530
NS		1	Screw type 232, PP 12G6531
NS		1	Screw type 102, PP 12G6532
NS		1	Screw type 312/322/412/423, PP 12G6533
NS		1	Screw type 484, PP 12G6534
NS		1	Screw, 500-sheet tray, PP 12G6538
NS		1	Screw type 124, PP 12G6539
NS		1	Screw type 121, PP 12G6540
NS	7370235	1	Kit, relocation package assembly printer
NS	7370563	1	Kit, relocation package assembly Output Expander
NS	7370564	1	Kit, relocation package assembly 5-Bin Mailbox
NS	7370565	1	Kit, relocation package assembly 500 Drawer
NS	7370566	1	Kit, relocation package assembly Duplex
NS	7370595	1	Kit, relocation package assembly Finisher

Part number index

P/N	Description	Page
11A9095	Power cord set, U.S., Canada, Brazil, Colombia, Costa Rica, Dominican Republic, Ecuador, El Salvador, Guatemala, Honduras, Nicaragua, Panama, Venezuela, Puerto Rico, Virgin Islands, Mexico, Asia Pacific (English), Japan, Taiwan, Saudi Arabia	7-35
12G1695	MarkNet N2001e Ethernet 10/100BaseTX	7-76
12G1696	MarkNet N2002e Ethernet 10BaseT/2	7-76
12G5303	Second transfer roll	7-14
12G6301	Fuser assembly 115V 500W	7-9
12G6302	Fuser assembly 220V 500W	7-9
12G6309	Parts packet, screw	7-3, 7-5, 7-37, 7-38, 7-39, 7-57, 7-63
12G6309	Parts packet, screw type 323	7-77
12G6309	Parts packet, screw, board mounting	7-55
12G6309	Parts packet, screws	7-12
12G6309	Registration motor assembly screw	7-19
12G6309	Screw, parts packet	7-27, 7-29
12G6310	Cable, video printhead - yellow	7-45
12G6311	Cable, video printhead - cyan	7-45
12G6312	Cable, video printhead - magenta	7-45
12G6312	Printhead assembly - cyan, includes HSYNC and mirror motor cables	7-45
12G6313	Cable, video printhead - black	7-45
12G6314	Cable, thermistor - yellow and cyan	7-45
12G6315	Cable, thermistor - magenta and black	7-45
12G6316	Cable, HVPS control - developer	7-43
12G6317	Cable, HVPS control - transfer	7-43
12G6318	Cable, engine/RIP communications	7-43
12G6319	Cable, options - stacker	7-3, 7-43
12G6320	Cable, options - bottom	7-43
12G6321	Cable, operator panel	7-45
12G6322	Printhead assembly	7-15
12G6322	Printhead assembly - black, includes HSYNC and mirror motor cables	7-45
12G6322	Printhead assembly - magenta, includes HSYNC and mirror motor cables	7-45
12G6322	Printhead assembly - yellow, includes HSYNC and mirror motor cables	7-45
12G6323	Engine board	7-39
12G6326	Riser card assembly w/o support brackets	7-37
12G6327	Transfer HVPS board	7-38
12G6328	Developer HVPS board	7-38
12G6329	Cable, LVPS to engine board and fuser, attached to LVPS	7-43
12G6329	Cable, LVPS to engine/power, attached to LVPS	7-43
12G6329	Cable, LVPS to RIP board power, attached to LVPS	7-43
12G6329	LVPS, 115V	7-35
12G6330	LVPS, 220V	7-35
12G6331	RIP board ground shield	7-37
12G6332	RIP board cover shield	7-37
12G6333	RIP board shield assembly	7-37
12G6334	INA riser support bracket	7-37
12G6335	Standoff, INA RIP spacer	7-37
12G6336	Engine board shield	7-39
12G6337	Fuser lamp, 115V 500W hot roll	7-9
12G6338	Fuser lamp, 115V 400W backup roll	7-9
12G6339	Blank, TLI/SN label	7-5

5060-00x

12G6340 Fuser top duct	7-5
12G6341 Fuser lamp, 220V 500W hot roll	7-9
12G6342 Fuser lamp, 220V 400W backup roll	7-9
12G6343 RIP fan duct	7-41
12G6344 Operator panel assembly, low volt	7-3
12G6345 Operator panel assembly, high volt	7-3
12G6346 Buckler housing	7-21
12G6347 Front hold down bellcrank	7-3
12G6349 Cable, fuser and yellow cartridge motor	7-43
12G6350 Cable, cyan and magenta cartridge drive motors	7-43
12G6350 Cable, cyan and magenta cartridge motor	7-43
12G6353 Cartridge support roller	7-29
12G6354 Rib housing	7-21
12G6355 Redrive door	7-16
12G6356 Door assembly, lower right	7-16
12G6356 Lower right door assembly	7-3
12G6357 Front cover assembly	7-3
12G6358 Fuser bottom duct	7-5
12G6360 Fuser wall duct	7-5
12G6361 Cable, attached to RIP fan	7-43
12G6361 RIP fan	7-41
12G6376 Rear hold down spring	7-31
12G6376 Spring, rear hold down	7-3
12G6377 Rear hold down bellcrank	7-31
12G6380 Machine pad	7-3, 7-57
12G6382 Cable, attached to main fan	7-43
12G6382 Fuser fan	7-41
12G6383 Fuser latch slide	7-5
12G6384 Fuser latch slide spring	7-5
12G6385 #58 Gear	7-27
12G6386 Duplex actuator arm	7-5
12G6387 Cable, ground	7-43, 7-45
12G6387 Ground strap	7-39
12G6388 Front lower left cover	7-3
12G6389 Top front support bracket	7-3
12G6390 Rear cover	7-5
12G6391 Paper path access door	7-3
12G6392 Left upper pivot cover	7-5
12G6393 Right front cover	7-3
12G6394 Front lower right cover	7-3
12G6395 Cover, left lower	7-5
12G6396 Right rear cover	7-3
12G6397 Front access door support	7-3
12G6398 Left lower pivot cover	7-5
12G6399 Front upper pivot cover	7-3
12G6400 Waste container door	7-5
12G6401 Rear fan cover	7-5
12G6402 Operator panel bezel with logos	7-3
12G6403 Spring, paper path access door	7-3
12G6404 Left front light shield cover	7-3
12G6405 Front right light shield cover	7-3
12G6408 Left upper cover assembly	7-5
12G6409 Redrive cap cover assembly	7-3
12G6410 Top cover assembly	7-3
12G6411 Front right handle cover assembly	7-3
12G6412 Front left handle cover assembly	7-3
12G6413 ITU light shield assembly	7-25

12G6416 500-Sheet tray assembly	7-23, 7-59
12G6417 Side restraint	7-23, 7-59
12G6418 Back restraint	7-23, 7-59
12G6419 Back restraint latch	7-23, 7-59
12G6420 Tray wear clip	7-23, 7-59
12G6421 Wear strip	7-23, 7-59
12G6425 Tray bias bellcrank assembly	7-23, 7-59
12G6426 Tray bias spring	7-23, 7-59
12G6427 Pick assembly 500-tray	7-24
12G6439 Black terminal contact assembly	7-29
12G6440 Magenta terminal contact assembly	7-29
12G6441 Cyan terminal contact assembly	7-29
12G6442 Terminal, contact spring	7-29
12G6443 ITU bias spring	7-29
12G6446 BOR housing assembly with motor	7-30
12G6446 Cable, attached to BOR lift motor	7-43
12G6447 Friction buckler	7-21
12G6448 Cable, MPF paper level	7-43
12G6449 MPF cable cover	7-21
12G6450 MPF door assembly	7-21
12G6451 MPF autocompensator pick assembly	7-21
12G6452 MP feeder door cover	7-21
12G6453 Frame bias latch	7-21
12G6454 Frame bias spring	7-21
12G6455 Frame bias latch cover	7-21
12G6456 Sensor mount bracket	7-21
12G6457 MPD support bracket cover	7-21
12G6458 MPF support bracket spring	7-21
12G6459 MPF support bracket	7-21
12G6460 Door hinge restraint	7-21
12G6461 Paper out/low sensor	7-21
12G6461 Sensor, paper out/low	7-24
12G6462 MPF bracket assembly	7-21
12G6463 MPF drive gear	7-21
12G6464 MPF drive gear shaft	7-21
12G6465 MPF drive gear bushing	7-21
12G6466 Paper size sensing link	7-18
12G6467 Paper size sensing spring	7-18
12G6468 Paper size sensing bracket	7-18
12G6469 Waste container latch	7-18
12G6470 Waste container latch spring	7-18
12G6471 Tray interlock bellcrank	7-24, 7-57
12G6472 Tray interlock bracket	7-24
12G6476 Paper level sensing assembly	7-24
12G6479 Cable, attached to VTB fan	7-43
12G6479 VTB fan	7-41
12G6480 Cable, attached to registration motor	7-43
12G6480 Registration motor	7-19
12G6482 Gear, staging reduction #1	7-19
12G6483 Gear, staging idler	7-19
12G6484 Gear, reference plate drive	7-19
12G6485 Lower access jam door assembly	7-5
12G6486 Cable assembly (includes S2/NMS/transparency sensors)	7-43
12G6486 S2/transparency/narrow media sensor assembly	7-17
12G6488 Transfer plate assembly	7-14
12G6489 Vacuum transport belt assembly	7-13
12G6490 VTB fan gap cover	7-41

5060-00x

12G6491 Jam access spring	7-13
12G6492 Redrive assembly	7-16
12G6493 Upper door hinge	7-16
12G6495 Fuser assembly, web oiler 100V 500W	7-11
12G6496 Fuser assembly 100V 500W	7-9
12G6496 Maintenance kit 115V	6-4
12G6497 Maintenance kit 220V	6-4
12G6498 Maintenance kit 100V	6-4
12G6502 100 V web oiler fuser	1-4, 6-4
12G6502 100 V web oiler upgrade kit	1-4
12G6503 Cable, printhead interlock/cover open	7-45
12G6503 Cable, printhead interlock/cover open (3-wire)	7-3, 7-25
12G6504 Cable, HVPS interlock/cover open	7-43
12G6504 Cable, HVPS interlock/cover open (2-wire)	7-3, 7-25
12G6506 Bin full sensor	7-3
12G6506 Cable, bin full sensor, with sensor	7-43
12G6507 250 output flag, includes flag retainer	7-3
12G6509 Card assembly, 64MB SDRAM	7-76
12G6509 SDRAM DIMM 64MB	7-37
12G6510 Cable tie	7-5, 7-57
12G6510 Cable Tie (6 in pack)	7-63
12G6511 Cable mount	7-5
12G6512 Lower front door latch	7-16
12G6513 Lower rear door latch	7-16
12G6514 110 V web oiler fuser	1-4, 6-4
12G6514 115V web oiler upgrade kit	1-4
12G6514 Fuser assembly, web oiler 115V 500W	7-11
12G6515 220 V web oiler fuser	1-4, 6-4
12G6515 220 V web oiler upgrade kit	1-4
12G6515 Fuser assembly, web oiler 220V 500W	7-11
12G6516 Fuser lamp, 100V 500W hot roll	7-9
12G6517 Fuser lamp, 100V 400W backup roll	7-9
12G6529 Screws, fuser fan mounting	7-41
12G6530 Parts packet, screw	7-3, 7-16, 7-33, 7-38
12G6530 Parts packet, screw type 324	7-77
12G6530 Parts packet, screws	7-41
12G6530 Screw, parts packet	7-63
12G6531 Parts packet, screw	7-39
12G6531 Parts packet, screw type 232	7-77
12G6531 Parts packet, Screw, paper size sensing assembly mounting	7-18
12G6532 Parts packet, screw	7-3, 7-7
12G6532 Parts packet, screw type 102	7-77
12G6533 Parts packet, screw	7-15, 7-16, 7-21, 7-23, 7-59, 7-61
12G6533 Parts packet, screw type 312/322/412/423	7-77
12G6533 Screw, parts packet	7-29
12G6534 Parts packet, screw	7-15
12G6534 Parts packet, screw type 484	7-77
12G6535 Guide assembly, left side	7-7
12G6536 Guide assembly, right side	7-7
12G6538 Parts packet, 500-sheet tray	7-77
12G6539 Parts packet, screw	7-15
12G6539 Parts packet, screw type 124	7-77
12G6540 Parts packet, screw	7-35, 7-38
12G6540 Parts packet, screw type 121	7-77
12G6541 Standoff, high voltage power supply - developer	7-38
12G6543 Web oiler index drive assembly	7-11
12G6545 Web oiler assembly	7-11
12G6545 Web oiler replacement	1-4

12G6546 Yellow terminal contact assembly	7-29
12G6550 500-Sheet Option tray pick assembly	7-57
12G6552 Base door assembly	7-57
12G6553 Pass thru sensor	7-57
12G6554 Paper guide	7-57
12G6555 500 option deflector	7-57
12G6556 Cover, frame	7-57
12G6557 Bellcrank lift spring	7-24, 7-57
12G6558 Pick arm lift bellcrank	7-24, 7-57
12G6559 Electronics/size sensing assembly with system board	7-57
12G6560 500 base assembly	7-57
12G6561 Spring	7-57
12G6562 Hinge	7-57
12G6563 Wall support plate	7-57
12G6565 Paper level sensing assembly	7-57
12G6566 Paper size sensing assembly	7-57
12G6567 Grounding spring	7-57
12G6568 Reflector label	7-23, 7-59
1339517 Power cord set, Bolivia, Peru	7-35
1339519 Power cord set, Kuwait, Bahrain, Qatar, UAE, Oman, Pakistan, Yemen, Iraq, Libya, Cyprus, UK, Ireland	7-35
1339520 Power cord set	7-35
1339521 Power cord set Israel (HV)	7-35
1339522 Power cord set Switzerland HV (French/German and Italian)	7-35
1339523 Power cord set South Africa (HV), Namibia (HV), Lesotho (HV), Botswana (HV)	7-35
1339524 Power cord set Chile (HV)	7-35
1339525 Power cord set Denmark, (HV)	7-35
1339544 Power cord set Argentina (HV)	7-35
43H5544 Power cord set, PRC	7-35
56P0161 RS-232-C serial/parallel 1284-C adapter	7-76
56P0162 Adapter, parallel 1284 C-B	7-76
56P0167 Anchor, bracket mounting	7-16
56P0167 Parts packet, screw	7-49, 7-51
56P0168 Drive assembly, 500 option 2	7-57
56P0169 Plate, 500 support assembly	7-57
56P0174 Cable assembly, 2nd transfer voltage	7-46
56P0310 Cable, signature button, attached to black HV contact assembly	7-45
56P0310 Cable, signature button, attached to cyan HV contact assembly	7-45
56P0310 Cable, signature button, attached to magenta HV contact assembly	7-45
56P0310 Cable, signature button, attached to yellow HV contact assembly	7-45
56P0310 Cartridge contact assembly, complete	7-31
56P0310 Cartridge contact assembly, complete, cyan/magenta/yellow	7-47
56P0311 Cable ITU autoconnect	7-43
56P0311 Cable, ITU Autocomp out with CB lead	7-47
56P0315 Punch assembly	7-71
56P0316 Staple assembly	7-73
56P0317 Cartridge staple	7-69
56P0317 Staple cartridge	7-73
56P0318 Box chad	7-71
56P0319 Accumulator w/o stapler	7-73
56P0320 Cover front door	7-69
56P0321 Top cover (tall finisher)	7-69
56P0322 Tray paper	7-71
56P0323 Output tray offset motor and gear assembly	7-71
56P0324 Motor assembly elevator tray	7-71
56P0325 Motor assembly paper feed	7-71
56P0326 Flag paper full	7-71
56P0327 Paper feed belt (40S3M888)	7-71

5060-00x

56P0328 Inverter transfer belt (40S3M198)	7-71
56P0329 Inverter D drive belt (40S3M225)	7-71
56P0330 Paper feed-input belt (40S3M279)	7-73
56P0331 Exit foam Roller drive belt (40S3M80)	7-71
56P0332 Accumulator paper feed belt (40S3M900)	7-71
56P0333 Tray elevator belt (60S6M1420)	7-71
56P0334 Tray elevator drive belt (170P2M4)	7-71
56P0335 Exit roller drive belt (40S2M264)	7-71
56P0336 Output tray offset drive belt (40S2M176)	7-71
56P0337 Punch belt (40S2M176)	7-71
56P0338 Low voltage power supply	7-71
56P0339 HCOF control board assembly	7-71
56P0340 Cable, communications	7-71, 7-75
56P0341 Power cord	7-71, 7-75
56P0342 Caster	7-71
56P0343 Punch timing sensor (OJ-541-A5)	7-71
56P0344 Inverter timing sensor (OJ511K-A5)	7-73
56P0345 Punch motor homing sensor (GP1A73A)	7-71
56P0346 Chad box full sensor (EE-SPY415)	7-73
56P0346 Exit timing sensor (EE-SPY415)	7-71
56P0347 Inverter jam/tray near full/output tray offset sensor (EE-SX1235A-P2)	7-71
56P0347 Jogger fence homing sensor (EE-SX460-P1-CHN)	7-73
56P0348 Drop timing sensor (OS-535223-602)	7-73
56P0349 Accumulator homing sensor (OS-311D-A5)	7-73
56P0350 Paper surface sensor (EE-SX460-P1-CHN)	7-71
56P0351 Cover open switch	7-73
56P0352 Printer docking switch SS-5FL-3T(10E)	7-71
56P0354 Bracket finisher alignment	7-71
56P0355 Guide vertical paper	7-73
56P0356 Pack magnet, strong and weak and door latch	7-71
56P0357 Actuation assembly	7-71
56P0358 Accumulator slides	7-73
56P0359 Harness cable assembly H2	7-75
56P0360 Harness cable assembly H3	7-75
56P0361 Harness cable assembly H4	7-75
56P0362 Harness cable assembly H5	7-75
56P0363 Harness cable assembly H6	7-75
56P0364 Harness cable assembly S1	7-75
56P0368 Harness cable assembly S5	7-75
56P0369 Harness cable assembly E2	7-75
56P0370 Harness cable assembly E3	7-75
56P0371 Harness cable assembly E5	7-75
56P0372 Harness cable assembly E6	7-75
56P0373 Harness cable assembly E7	7-75
56P0374 Harness cable assembly E8	7-75
56P0375 Harness cable assembly E9	7-75
56P0376 Harness cable assembly E10	7-75
56P0378 Harness cable assembly R1	7-75
56P0379 Harness cable assembly D1	7-75
56P0380 Harness cable assembly D2	7-75
56P0381 Harness cable assembly D3	7-75
56P0382 Harness cable assembly D5	7-73, 7-75
56P0383 Solenoid inverter	7-71
56P0384 Accumulator belt (hook)	7-73
56P0385 Solenoid drop assembly	7-73
56P0386 Fan assembly DC motor	7-71
56P0387 Bar tip unit	7-69

56P0388 Tray limit switch	7-71
56P0400 Cover, front	7-51
56P0401 Rear cover	7-49
56P0402 Cover, rear support	7-49
56P0405 Door assembly, right jam access	7-51
56P0407 Shield, output option card	7-49
56P0408 Output Expander assembly, mechanical linkage	7-49
56P0409 Cover, front control board	7-49
56P0410 Bracket, attach	7-51
56P0411 Door, front	7-53
56P0412 Rear structural cover	7-53
56P0413 Cover, left side	7-53
56P0415 Cover, right	7-53
56P0416 Cover, top bin	7-53
56P0417 Flag, bin full	7-53
56P0418 Bracket, attach front	7-55
56P0420 Bracket asm, bail attach	7-53
56P0422 Latch, access door front	7-53
56P0423 Latch, rear access door	7-53
56P0430 Duplex card assembly	7-63
56P0432 Duplex front jam tray assembly	7-61
56P0433 Right jam clearance tray assembly	7-63
56P0434 Right side front tray guide	7-61
56P0435 Duplex shaft mount	7-61
56P0436 Upper rib assembly	7-63
56P0437 Duplex output sensor	7-63
56P0439 Duplex paper guide	7-61
56P0441 Duplex shaft assembly	7-61
56P0442 Duplex exit sensor	7-61
56P0444 F/R backup shaft assembly	7-61
56P0445 40T shaft drive F/R gear	7-61
56P0447 Duplex entry shaft assembly	7-61
56P0449 Support decurl guide	7-61
56P0451 Backup spring assembly	7-63
56P0452 Backup spring assembly	7-63
56P0454 Wall support	7-61
56P0455 Sensor mount plate	7-61
56P0456 Duplex support plate	7-63
56P0457 Duplex support bracket	7-61
56P0458 Chassis ground spring	7-63
56P0459 Back support	7-63
56P0462 Autoconnect cable assembly	7-63
56P0463 DC forward/reverse motor assembly	7-63
56P0464 DC duplex feed motor	7-63
56P0465 Drive alignment shaft assembly	7-63
56P0466 Spur drive gear	7-61
56P0467 26T duplex gear	7-61
56P0468 Pass thru spring	7-61
56P0470 Aligner arm spring	7-61
56P0471 Bellcrank assembly	7-61
56P0472 Pass thru shaft assembly	7-61
56P0473 Brake pad	7-61
56P0474 Decurl BAC assembly	7-61
56P0475 Brake spring	7-61
56P0476 5 mm bushing	7-61
56P0477 Reduction gear shaft	7-63
56P0478 Aligner spring	7-63

5060-00x

56P0479 Front decurl assembly	7-61
56P0480 Back cover	7-61
56P0482 Pulley washer	7-61
56P0483 Deflector actuator assembly	7-61
56P0490 Jumper, AC power cord	7-65
56P0491 Caster, movable	7-67
56P0492 Caster, fixed	7-67
56P0493 F adjuster	7-67
56P0494 System control board	7-65
56P0495 LVPS	7-65
56P0497 AC power outlet	7-65
56P0498 AC power inlet	7-65
56P0500 Front cover	7-67
56P0501 Cover, main CA	7-67
56P0503 Right side cover	7-67
56P0504 Left side cover	7-67
56P0505 Rear cover	7-67
56P0506 Locating pin, options rear left	7-67
56P0507 Locating pin, options front right	7-67
56P0508 Upper left side jam cover	7-67
56P0509 Cable, feed unit special sensors	7-67
56P0510 Cable, feed unit sensors	7-67
56P0511 Paper size sensors cable	7-65
56P0512 Cable, elevator motor	7-67
56P0513 Elevator motor assembly	7-65
56P0514 Options autoconnect cable assembly	7-67
56P0515 Magnetic latch	7-67
56P0516 Sensor, photo interrupter	7-65
56P0517 Options cable mounting plate	7-67
56P0518 Flag, paper size C	7-65
56P0519 Flag, paper size R	7-65
56P0520 Flag, paper size F	7-65
56P0522 Spring, paper size flag	7-65
56P0523 Paper tray arms	7-65
56P0524 Paper tray guide	7-65
56P0525 Feed unit, complete assembly	7-65
56P0526 Sensors, special optical	7-65
56P0527 Bushing	7-65
56P0528 Feed roller	7-65
56P0529 Feed cam	7-65
56P0530 Spring, feed unit	7-65
56P0531 Parts packet, E-clips	7-65
56P0532 Bushing, 060	7-65
56P0533 Spring, feed unit front	7-65
56P0534 Spring, feed unit rear	7-65
56P0535 Clip, plastic 5W	7-65
56P0536 Level sensor flag	7-65
56P0539 Near empty sensor flag	7-65
56P0540 Spring, extension	7-65
56P0541 Tray present lever	7-67
56P0542 Separation/torque roller	7-65
56P0543 Cable clamp	7-67
56P0544 Emitter timing wheel	7-65
56P0547 Elevator lift belt	7-65
56P0548 Elevator lift gear	7-65
56P0549 Elevator lift	7-65
56P0550 Cable, tray media level sensor	7-55

56P0551 Cable, paper media low/out	7-24
56P0551 Cable, paper out/low and transparency media 2 sensors	7-43
56P0552 Cable, autocompensator motor	7-43
56P0552 Cable, pick motor extension	7-24
56P0560 Rear ITU guide	7-29
56P0561 Paper size sensor box assembly	7-65
56P0562 Feed cover	7-65
56P0563 Ring 7, elevator lift gear/elevator lift	7-65
56P0564 Kit, stabilizer with mounting screws	7-67
56P0565 Parts packet, screws	7-65, 7-67
56P0566 Finisher install kit	7-69
56P0568 ITU drive motor, SKC	7-27
56P0569 Rear cover	7-69
56P0573 Upper right side cover (tall finisher)	7-69
56P0574 Lower tray cover	7-69
56P0575 Front/rear lower cover	7-69
56P0576 Bottom kick cover	7-69
56P0577 Lower right side cover	7-69
56P0578 Tray wall cover	7-71
56P0594 Cam, BOR front	7-29
56P0595 Cam, BOR rear	7-29
56P1120 Card assembly, Bar code	7-76
56P1187 RIP board assembly, non-network, Model 5060-001	7-37
56P1188 RIP board assembly - network, model 5060-002	7-37
56P1198 Thermistor card	7-15
56P1213 Fuser drive assembly	7-12
56P1214 Cartridge drive assembly, cyan/magenta/black	7-33
56P1215 Cartridge drive assembly, yellow	7-33
56P1216 Cable, waste toner full, attached to ITU drive assembly	7-43
56P1216 ITU motor drive assembly with SKC motor	7-27
56P1237 Autocomp shaft assembly	7-24
56P1238 Fuser drive motor	7-12
56P1277 Paper tray guide	7-3
56P1280 Harness cable assembly stapler	7-75
56P1286 Upper right side cover (short finisher)	7-69
56P1287 Scanner plate (short finisher)	7-69
56P1290 Cover wire	7-69
56P1295 ITU assembly	7-25
56P1431 MarkNet X2011e Ethernet 10/100 BaseTX-1 port	7-76
56P1432 MarkNet X2012e Ethernet 10/100 BaseTX/10 Base2 - 1 port	7-76
56P1433 MarkNet X2031e Ethernet 10/100 Base TX - 3 port	7-76
56P1434 MarkNet X2030e Token-Ring - 3 port	7-76
56P1461 Card assembly, ImageQuick	7-76
56P1495 Parts packet, ITU loading - yellow	7-29
56P1496 Parts packet, ITU loading - cyan	7-29
56P1497 Parts packet, ITU loading - magenta	7-29
56P1498 Parts packet, ITU loading - black	7-29
56P1502 Cable assembly, HVPS control - transfer	7-47
56P1502 Cable, HVPS control - transfer	7-46
56P1504 Active restraint pad	7-23, 7-59
56P1561 Cartridge contact assembly, complete black	7-47
56P1565 Cable assembly, black terminal contact	7-46
56P1566 Cable assembly, magenta terminal contact	7-46
56P1567 Cable assembly, cyan terminal contact	7-46
56P1568 Cable assembly, yellow terminal contact	7-46
56P2031 Cable, web oiler motor	7-43
56P2107 Card assembly IPDS/SCS/Tne	7-76

5060-00x

56P2194 Nip relief handle	7-19
56P2204 Redrive belt 300 T	7-16
56P2216 Shield, door spring	7-3
56P2217 Handle, front access door	7-3
56P2218 Detent, front access door	7-3
56P2219 Housing, front access door	7-3
56P2220 Parts packet, screw	7-3
56P2246 Detent spring	7-3
56P2290 Fuser lift duct	7-5
56P2291 Redrive belt cover duct	7-5
56P2292 Printhead spacer	7-15
56P2294 Accumulator drive belt (B30S2M334)	7-71, 7-73
56P2295 Jogger fence belt (B40S2M460)	7-73
56P2296 Card assembly, printhead diagnostic aid	7-15
56P2484 Belt, transfer	7-63
56P2489 Label, top paper jam, 221/222	7-3
56P9909 Card assembly, PRESCRIBE	7-76
56P9910 Card assembly, 128MB SDRAM	7-76
56P9910 SDRAM DIMM 128MB	7-37
56P9911 Card assembly, 256MB SDRAM	7-76
56P9912 Card assembly, 4MB flash DIMM	7-76
56P9913 Card assembly, 8MB flash DIMM	7-76
56P9914 Card assembly, 16MB flash DIMM	7-76
56P9917 Card assembly, 32MB flash DIMM	7-76
56P9926 Lexmark Optra Forms software	7-76
56P9927 Lexmark Forms Director software	7-76
56P9928 Lexmark Forms 4MB flash DIMM	7-76
56P9929 Lexmark Forms 8MB flash DIMM	7-76
56P9930 Lexmark Forms 16MBMB flash DIMM	7-76
56P9932 Lexmark Forms 64MB flash DIMM	7-76
56P9934 MarkNet Token-Ring Print Server	7-76
56P9935 Card assembly, Traditional Chinese font DIMM	7-76
56P9936 Card assembly, Simplified Chinese Font DIMM	7-76
56P9942 Hard drive mounting kit	7-76
56P9975 Card assembly, Japanese font DIMM	7-76
56P9982 Hard disk, 20GB with/adaptor (formatted)	7-76
7370235 Kit, relocation package assembly printer	7-77
7370563 Kit, relocation package assembly Output Expander	7-77
7370564 Kit, relocation package assembly 5-Bin Mailbox	7-77
7370565 Kit, relocation package assembly 500 Drawer	7-77
7370566 Kit, relocation package assembly Duplex	7-77
7370595 Kit, relocation package assembly Finisher	7-77
99A0052 Shaft assembly, lower exit, also order PP 99A0572	7-49
99A0070 Pick roll tires	7-57
99A0070 Pick rolls (2 each per package)	7-24
99A0104 Spring, upper diverter	7-49, 7-53
99A0107 Deflector, upper redrive, also order 99A0104	7-49
99A0263 Parts packet, screw, board mounting	7-53
99A0267 Parts packet, retainer	7-61
99A0323 Paper guide assembly	7-63
99A0351 Sensor, Output Expander pass thru	7-51
99A0361 Belt, 160 gear	7-51
99A0362 Arm assembly, belt idler	7-51
99A0363 Pulley, drive	7-51
99A0364 Spring, belt tensioner	7-51
99A0368 Shaft assembly, lower, also order PP 99A0572	7-51
99A0369 shaft assembly, exit, also order PP 99A0572	7-49

99A0408 INA blank flat shield, use when options are not installed	7-37
99A0409 Level sensor bracket	7-49
99A0414 Sensor, dual bin full	7-49
99A0415 Spring, swing arm	7-49
99A0424 Infrared adapter	7-76
99A0426 Screw, parallel connector mounting	7-37
99A0450 Retainer	7-55
99A0462 Grease packet, IBM #23	7-55
99A0481 Latch, output tray	7-49, 7-51
99A0482 Spring, output tray	7-49, 7-51
99A0545 External serial adapter	7-76
99A0560 Tri-Port Adapter - LocalTalk/serial/infrared	7-76
99A0572 Parts packet, shaft bearing	7-49, 7-51
99A0629 Coax/Twinax Adapter for SCS	7-76
99A0912 Frame assembly	7-51
99A0913 Shaft assembly, middle 40T, also order PP 99A0572	7-51
99A0915 Board, Output Expander DC motor	7-49
99A0923 Parallel port + USB INA card assembly	7-76
99A1512 Cover, redrive cap	7-53
99A1580 Flag, output paper level	7-49
99A1611 Ethernet blank shield, use with non-network RIP boards	7-37
99A1687 Stop asm, paper tray	7-53
99A1688 Diverter arm	7-49
99A1689 Spring clutch assembly	7-49
99A1708 Cover, right side	7-53
99A1710 Cover, wire	7-53
99A1712 Tray, paper cap	7-53
99A1713 Support, paper tray	7-53
99A1715 Roller asm, rear access door	7-55
99A1716 Drive asm, main DC drive	7-53
99A1717 32 ppm drive gear	7-63
99A1717 Gear, drive	7-55
99A1718 Cable asm, lower autoconnect	7-53
99A1719 Cable asm, upper autoconnect	7-53
99A1721 Deflector, paper top bin	7-55
99A1722 Deflector, paper	7-55
99A1723 Shaft asm, drive	7-53
99A1724 Shaft asm, drive with gear	7-53
99A1725 Packet, drive shaft bushing	7-53
99A1726 Frame asm, left w/clutch asm	7-53
99A1727 Frame asm, right side	7-55
99A1728 Cam, diverter actuator	7-55
99A1729 Latch, diverter actuator	7-55
99A1730 Arbor, diverter actuator	7-55
99A1731 Spring, diverter actuator	7-55
99A1732 Solenoid, diverter	7-55
99A1734 Spring, static ground	7-55
99A1735 Flag, bin full	7-53
99A1736 Cable, dual sensor	7-53
99A1737 Sensor, dual bin level	7-53
99A1738 Deflector, paper exit w/brush	7-55
99A1740 Board asm, 5-Bin Mailbox system	7-53
99A1741 Spring, diverter	7-55
99A1742 Sensor, 5-Bin Mailbox pass thru	7-53
99A1743 Kit, 5-Bin Mailbox asm	7-53
99A1744 Kit, Multi-Bin Stacker	7-51
99A1784 Bracket, attach	7-49

5060-00x

99A1786 Gear, drive	7-53
99A1787 Deflector	7-55
99A1788 Retainer, R-ring	7-55
99A1789 C-clip	7-55
99A1789 Retainer, C-clip	7-63
99A1817 Tray, Output Expander	7-49
99A2432 Blank parallel shield, use with network RIP boards	7-37
99A2540 Redrive bearing	7-61